

Table 5.1
OWSLEBURY - ABUNDANCE OF OYSTER SHELLS ACCORDING TO CONTEXT TYPE

CONTEXT TYPE	LV	UMLV	TOTAL LV	% UMLV	RV	UMRV	TOTAL RV	% UMRV	TOTAL LV + RV	MNI	% OF SITE TOTAL
DITCHES	537	699	1236	56.6	703	583	1286	45.3	2522	1312	67.00
GULLIES	62	181	233	77.7	91	130	221	58.8	454	265	13.53
QUARRIES	61	81	132	61.4	60	79	139	56.8	271	166	8.48
TRACKWAYS	17	56	73	76.7	24	33	57	57.9	130	73	3.73
PITS	13	30	43	69.8	20	21	41	51.2	84	53	2.71
HOLLOW WAY	14	16	30	53.3	15	14	29	48.3	59	35	1.79
OVENS	5	6	11	54.6	10	7	17	41.2	28	19	0.97
TRACK GULLIES	6	6	12	50.0	13	1	14	7.7	26	16	0.82
POST HOLES	2	5	7	71.4	1	3	4	75.0	11	10	0.51
COBBLES	1	1	2	50.0	1	3	4	75.0	6	4	0.20
UNKNOWN	0	4	4	100.0	1	1	2	50.0	6	5	0.26
COLUMN TOTALS	698	1065	1763	60.9	939	875	1814	48.2	3597	1958	100.00

Table 5.2
 OWSLEBURY - ABUNDANCE OF OYSTER SHELLS ACCORDING TO PHASE

PHASE	LV	UMLV	TOTAL LV	% UMLV	RV	UMRV	TOTAL RV	% UMRV	TOTAL LV+RV	MNI	% OF SITE TOTAL
3rd BC	5	11	16	68.8	3	8	11	72.7	27	19	0.96
3rd - 2nd BC	3	3	6	50.0	4	4	8	50.0	14	8	0.40
2nd BC	0	3	3	100.0	0	1	1	100.0	4	4	0.20
2nd - 1st BC	0	1	1	100.0	0	0	0	0.0	1	1	0.05
1st BC	21	38	59	64.4	36	34	70	48.6	129	73	3.68
1st BC - 1st AD	0	3	3	100.0	2	0	2	0.0	5	5	0.25
Early 1st AD	0	1	1	100.0	0	5	5	100.0	6	6	0.30
Mid 1st AD	47	52	99	52.5	66	38	104	36.5	203	104	5.25
Mid-late 1st AD	2	3	5	60.0	4	3	7	42.9	12	7	0.35
Late 1st AD	64	123	187	65.8	95	106	201	52.7	388	221	11.15
1st AD	29	55	84	65.5	48	26	74	35.1	158	91	4.59
1st - 2nd AD	0	1	1	100.0	0	0	0	0.0	1	1	0.05
2nd AD	117	167	274	57.3	139	132	271	48.7	545	294	14.63
2nd - 3rd AD	0	2	2	100.0	0	0	0	0.0	2	2	0.10
3rd AD	108	124	232	53.5	137	124	261	47.5	493	265	13.37
3rd - 4th AD	251	349	600	58.2	319	288	607	47.5	1207	636	32.19
4th AD	45	128	173	74.0	67	96	162	58.6	355	195	9.84
Unknown	11	23	34	67.7	15	13	28	46.4	62	44	2.22
Modern	0	2	2	100.0	2	2	4	50.0	6	4	0.2
COLUMN TOTALS	703	1079	1782	60.6	937	879	1816	48.4	3598	1982	100.0

FIGURE 5.1

PERCENTAGE FREQUENCY OF OYSTER SHELLS FOR EACH PHASE AT OWSLEL, NY

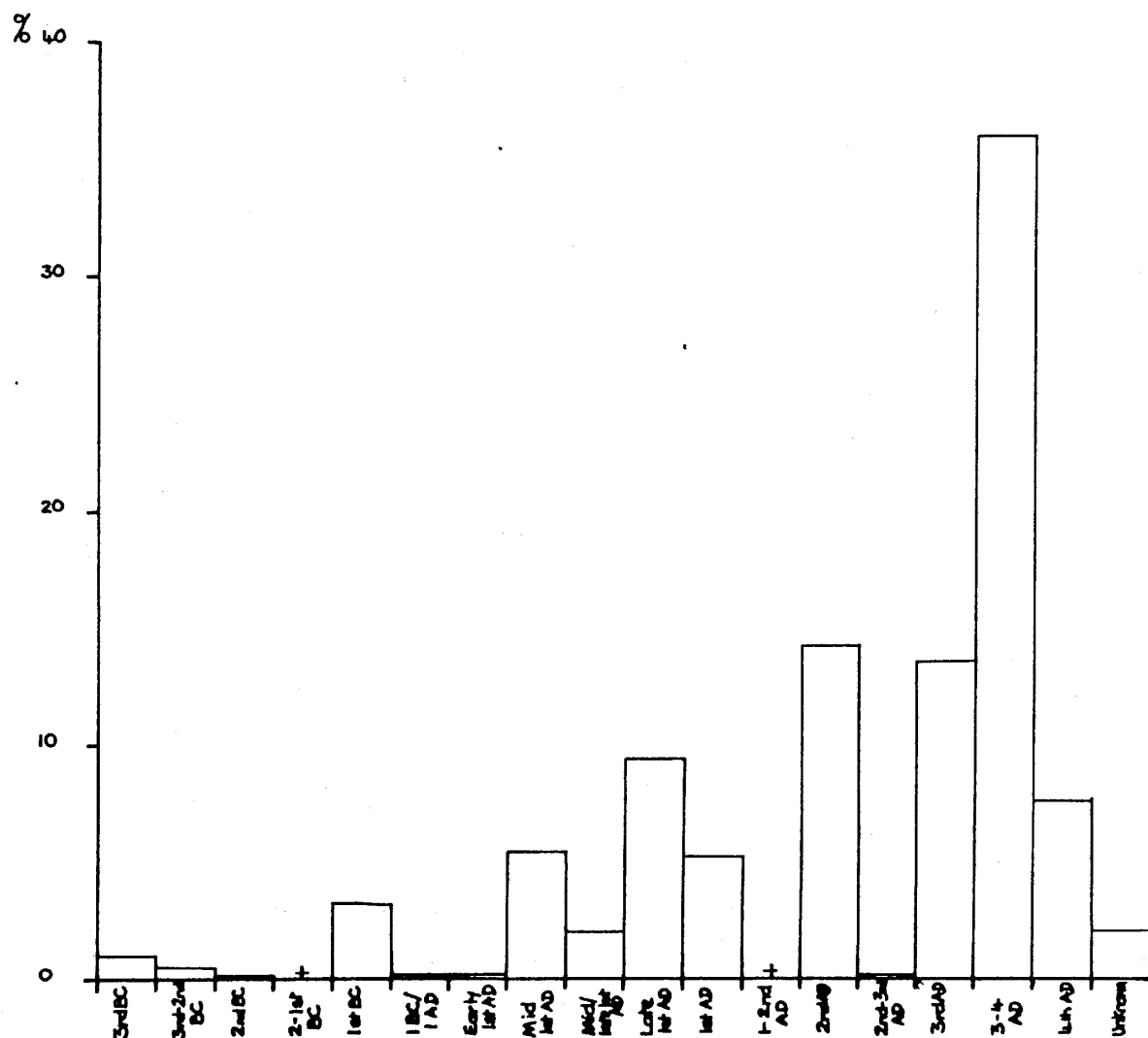
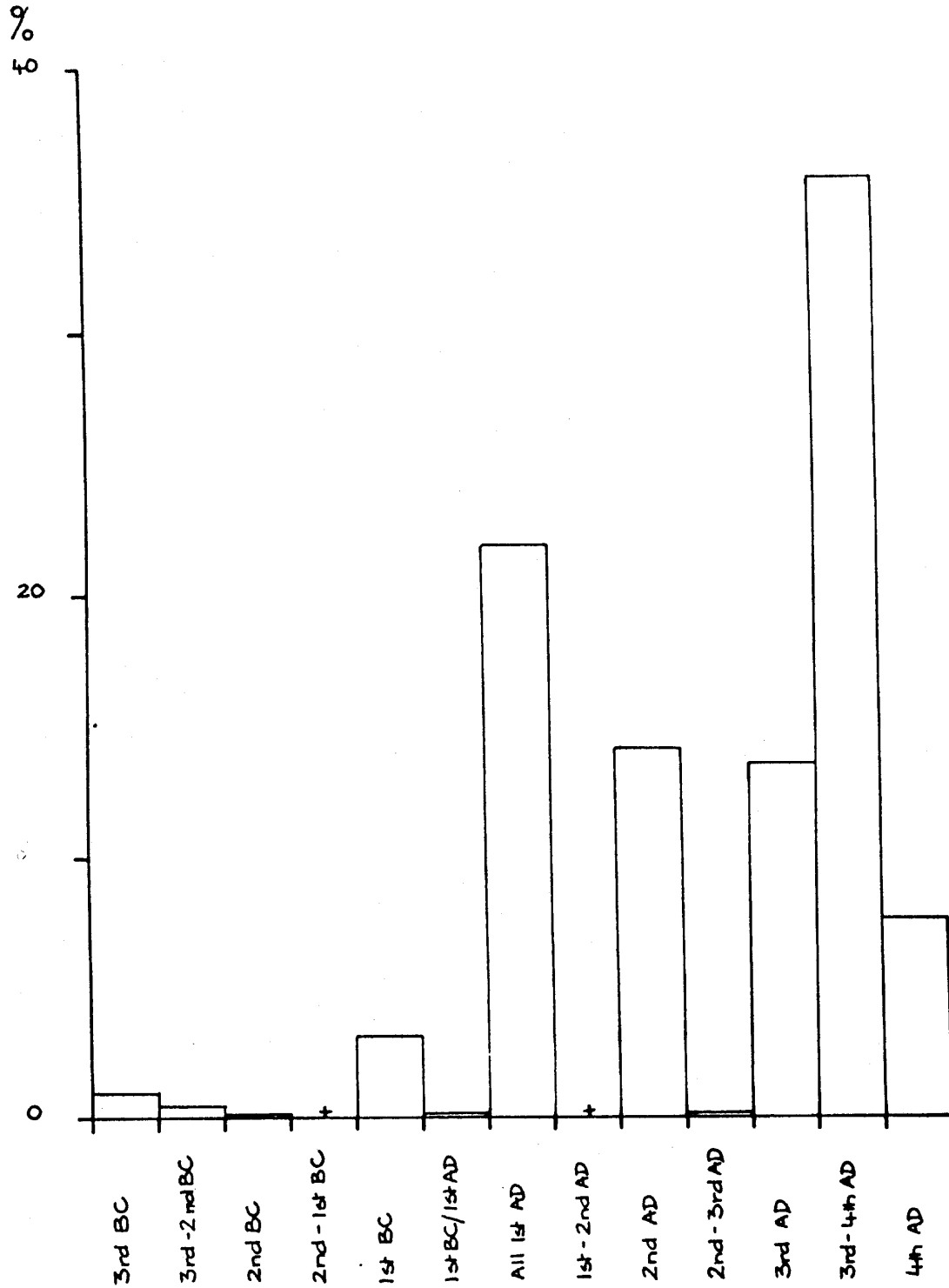


Figure 5-2

OWSLEBURY.
 PERCENTAGE OF OYSTERS FROM WHOLE SITE FOUND IN EACH PHASE
 (SOME GROUPING)

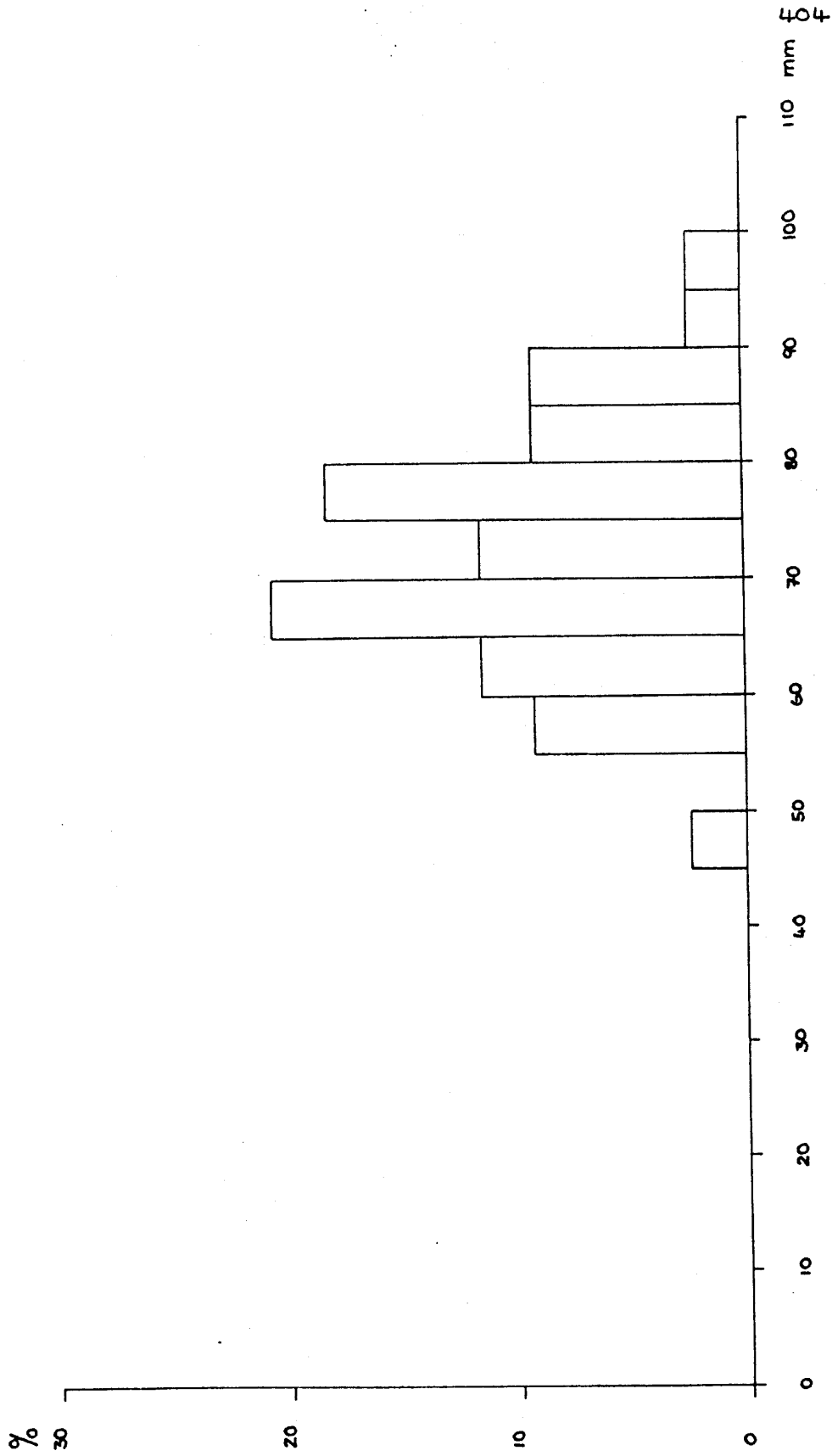


+ denotes oyster shell present, but in insignificant quantity.

Table 5.3
Summary of size data for Owslebury oyster shells (RVMW)

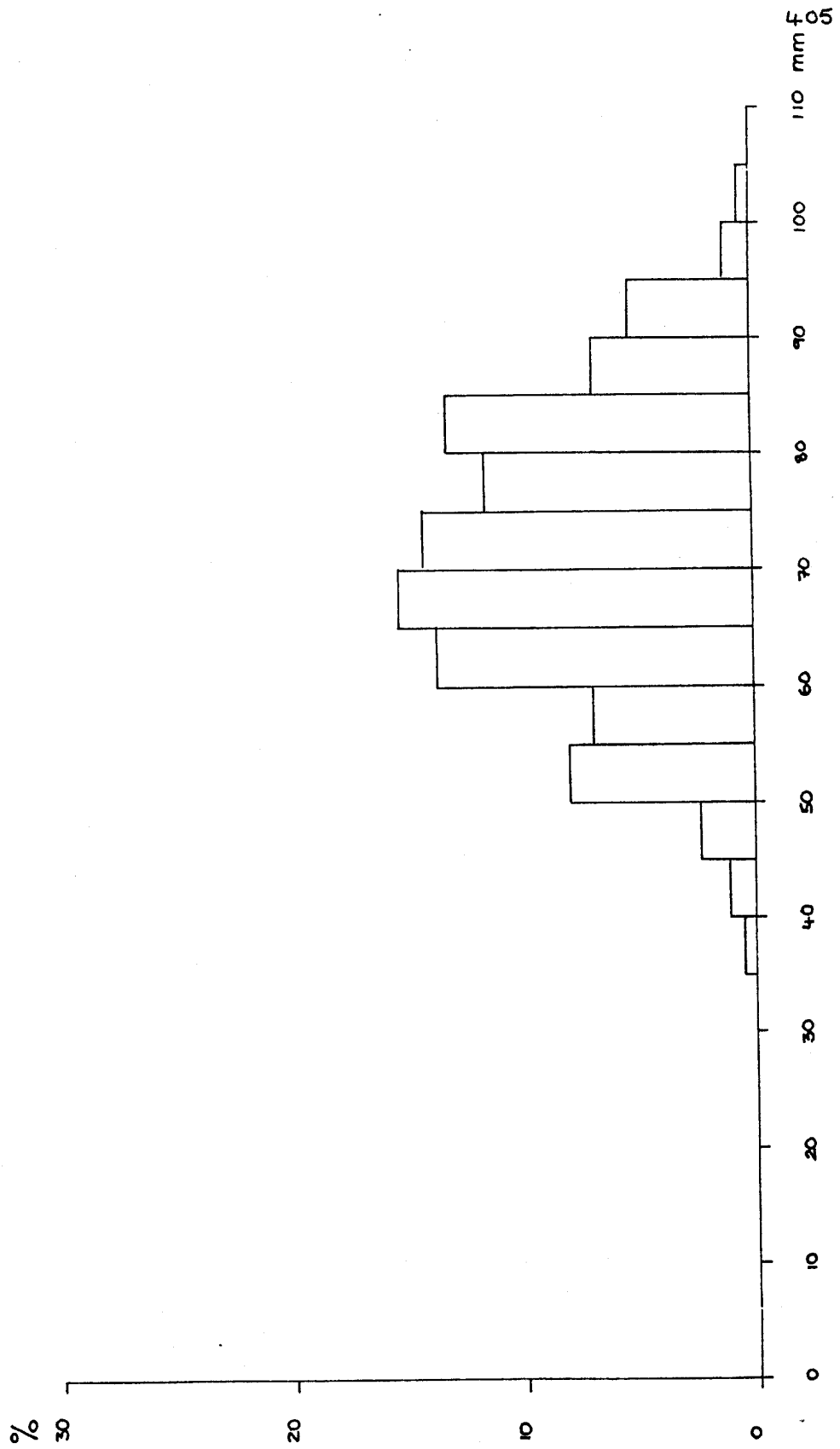
	N	MEAN	MEDIAN	TRMEAN	STDEV	SEMEAN	MIN	MAX
ows1e.1	44	71.52	70.50	71.55	10.74	1.62	46.00	95.00
ows1e.2	191	70.073	70.000	70.099	12.533	0.907	38.000	100.000
ows1e.3	88	71.50	71.50	71.60	12.61	1.34	38.00	100.00
ows1e.4	56	70.82	70.00	70.88	12.95	1.73	46.00	95.00
ows1e.5	47	66.51	65.00	66.56	11.41	1.66	40.00	90.00
ows1e.6	86	71.01	72.00	71.22	9.98	1.08	35.00	90.00
ows1e.7	119	70.16	71.00	70.28	10.96	1.00	41.00	97.00
ows1e.8	316	71.703	71.000	71.750	10.286	0.579	31.000	110.000
ows1e.9	35	69.37	67.00	69.13	12.23	2.07	46.00	96.00
ows1e.10	48	71.31	73.50	71.77	12.37	1.79	38.00	94.00
ows1e.11	30	70.67	66.50	70.00	12.93	2.36	50.00	100.00
ows1e.12	79	71.15	72.00	71.39	10.19	1.15	35.00	90.00
ows1e.13	98	70.93	71.00	70.94	10.49	1.06	43.00	97.00
ows1e.14	258	71.950	71.000	72.004	9.968	0.621	31.000	98.000

Figure 5.4 Owslebury. owslebury. owslebury size frequency of oyster shells RVMW n = 44



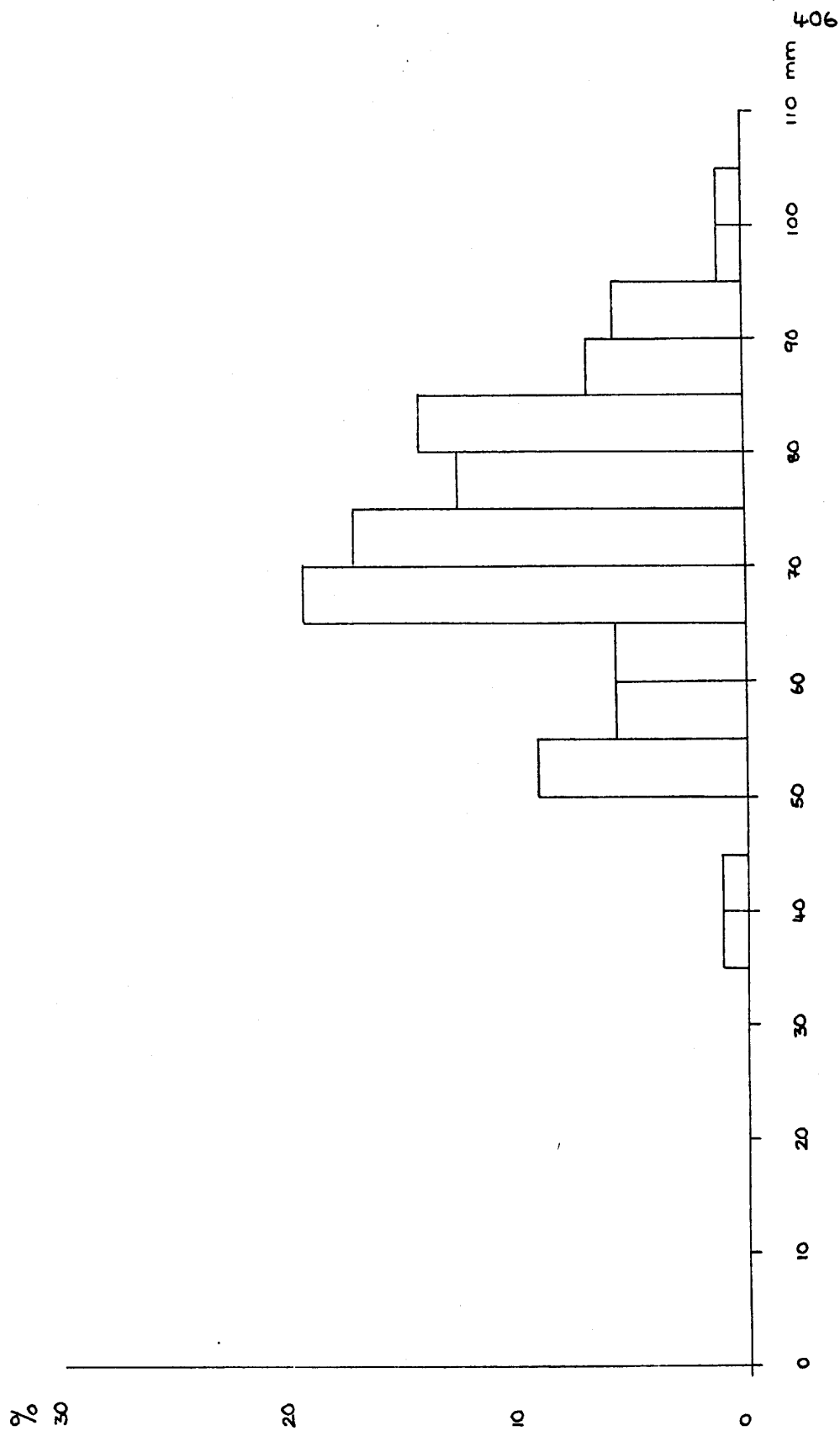
5.5

Figure 5.5 OWSLE 2 SIZE FREQUENCY OF OYSTER SHELLS RYMW N = 191



5.6

Figure 5.6 OWSLE 3 SIZE FREQUENCY OF OYSTER SHELLS RVMW n = 88



5.7

Figure 5.7 OMSLE 4 SIZE FREQUENCY OF OYSTER SHELLS RVMW N= 56

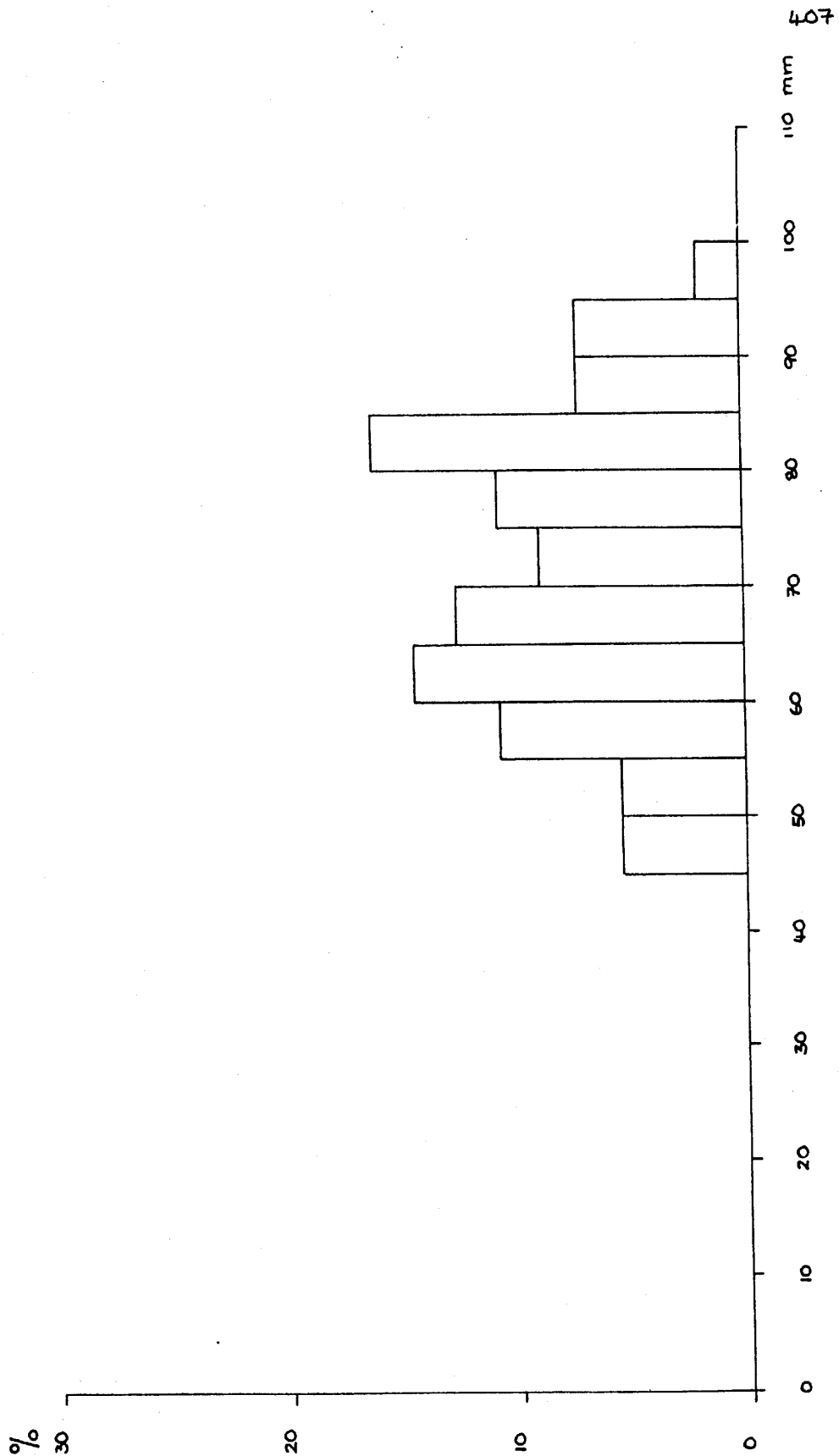


Figure 5.8 OWSLE 5 SIZE FREQUENCY OF OYSTER SHELLS R/VMMW n = 47

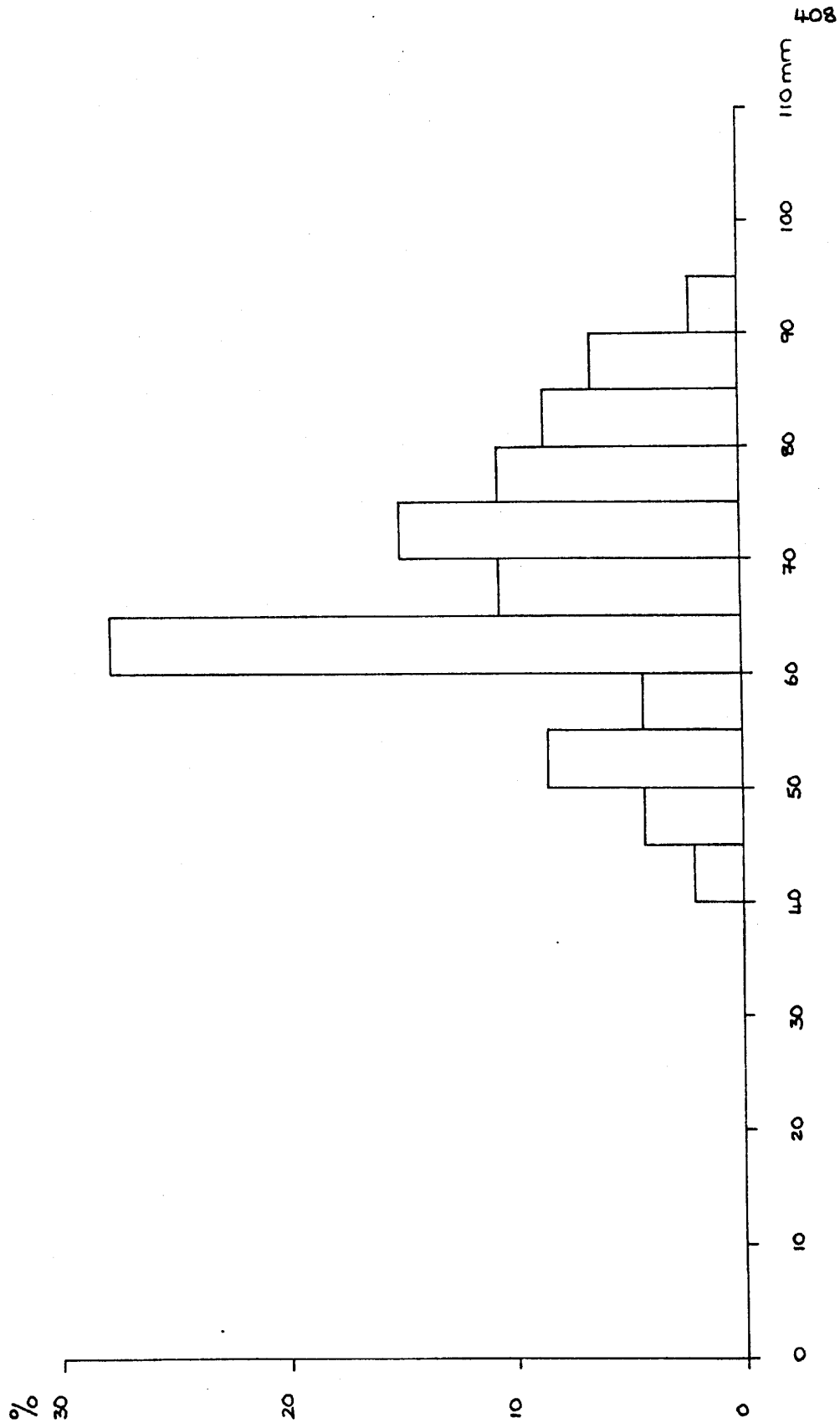


Figure 5.9 OWSLE 6 SIZE FREQUENCY OF ONSTER SHELLS RVMW n = 86

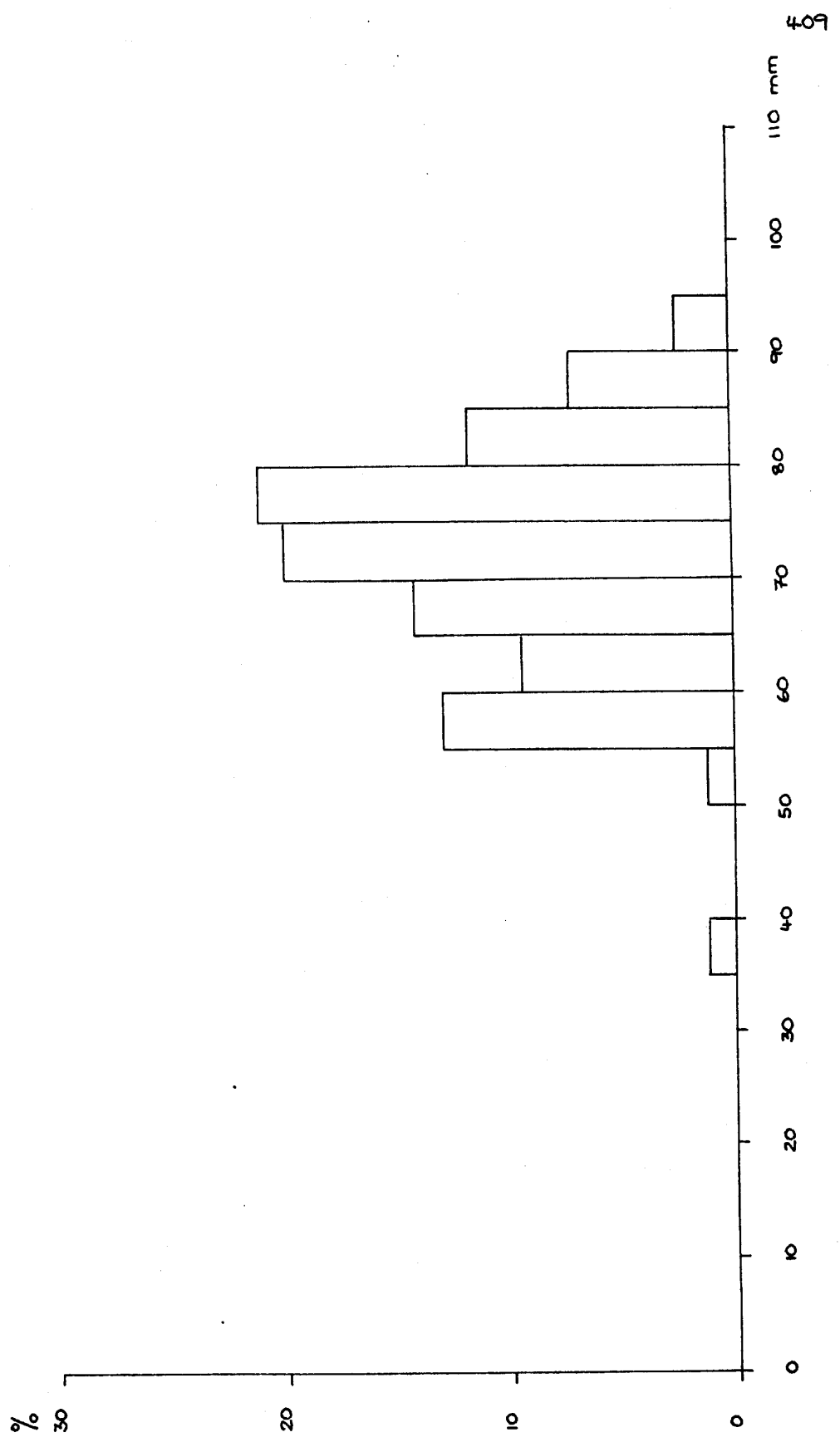
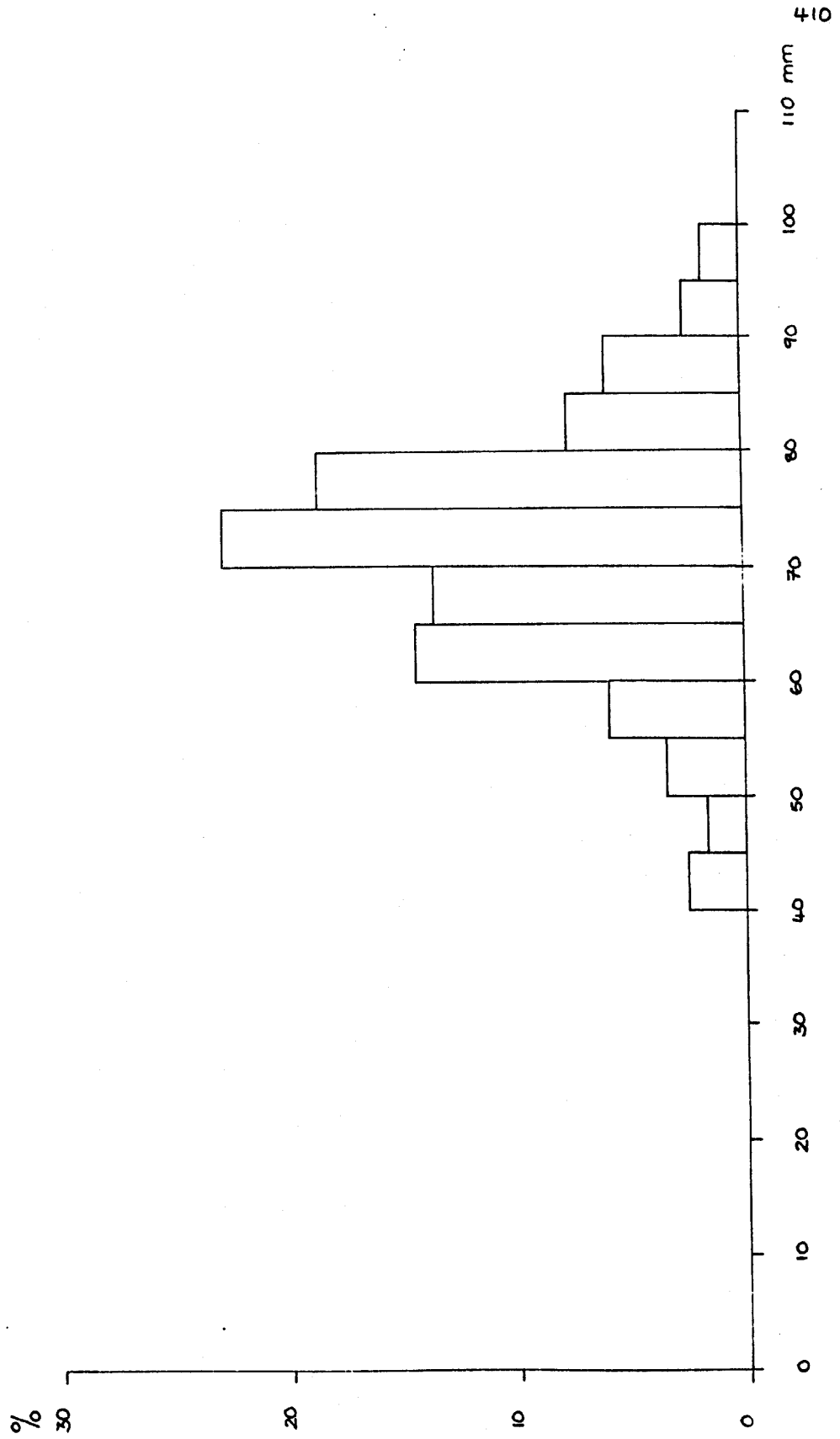
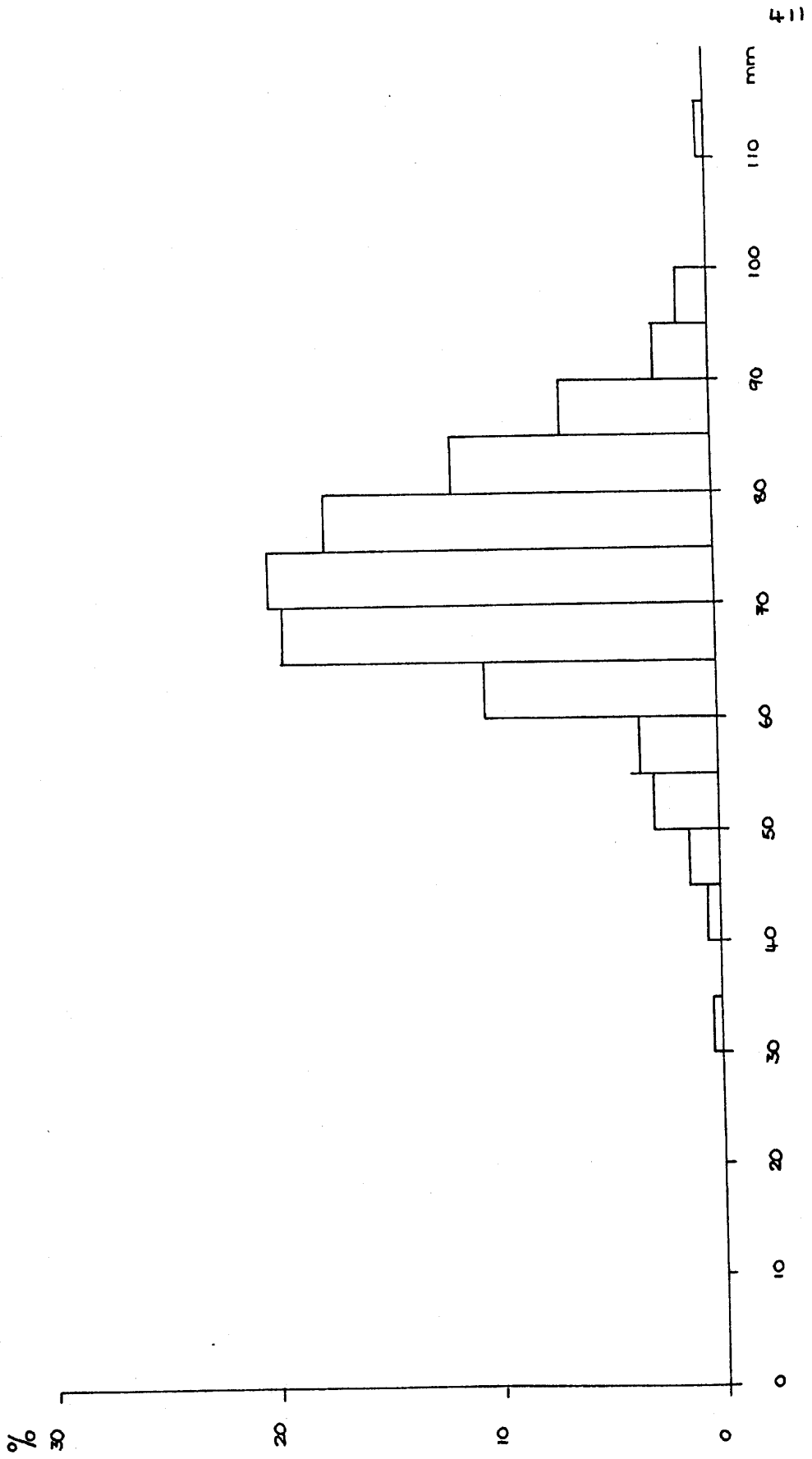


Figure 5.10 OWSLE 7 SIZE FREQUENCY OF OYSTER SHELLS RVMW n = 119



S.11

Figure S.11 OWSLE 8 SIZE FREQUENCY OF OYSTER SHELLS RYMAN N = 316



6.12

Figure 5.12 OWSLE 9 SIZE FREQUENCY OF ONSTER SHELLS RYMAN n = 35

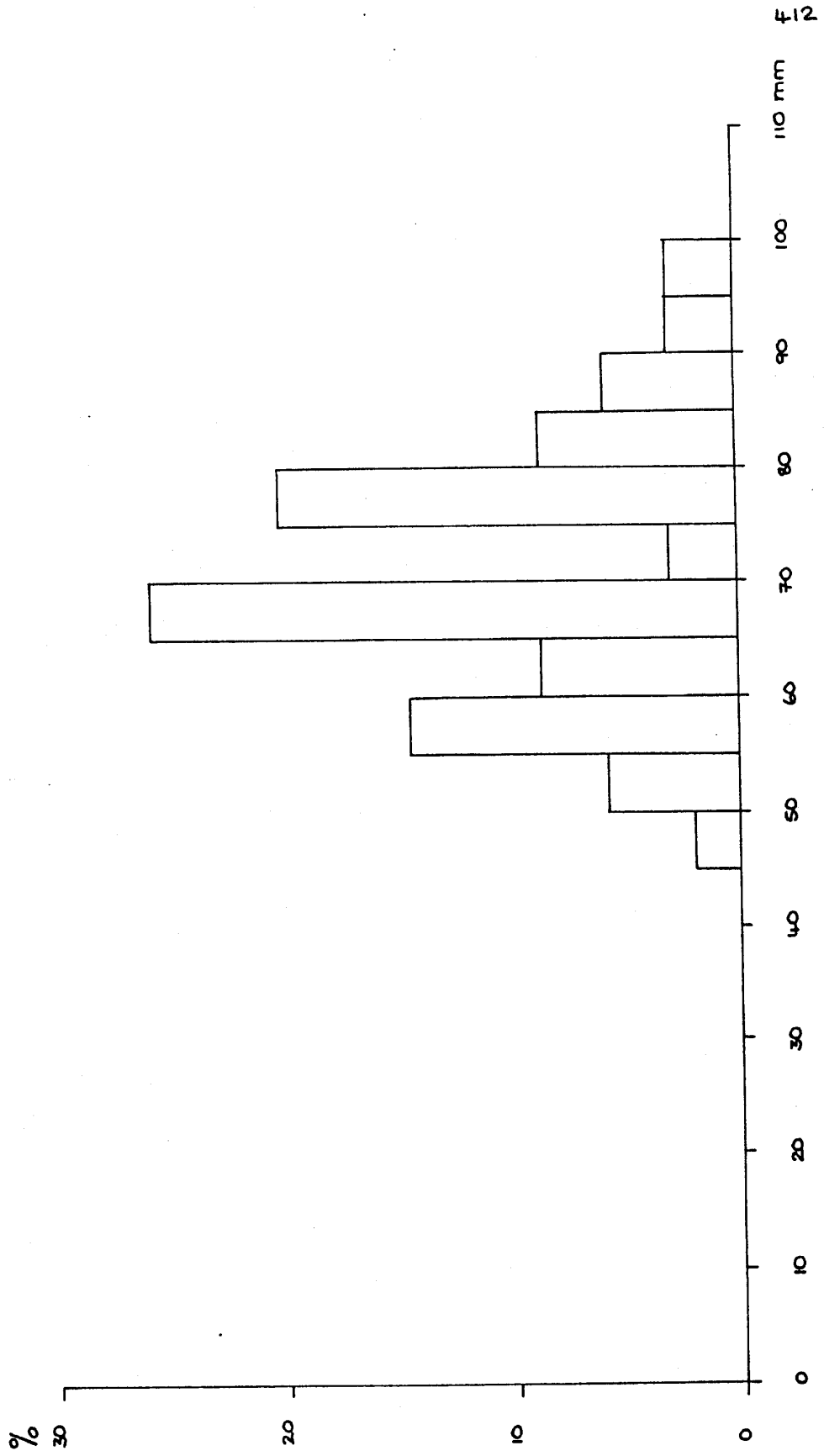
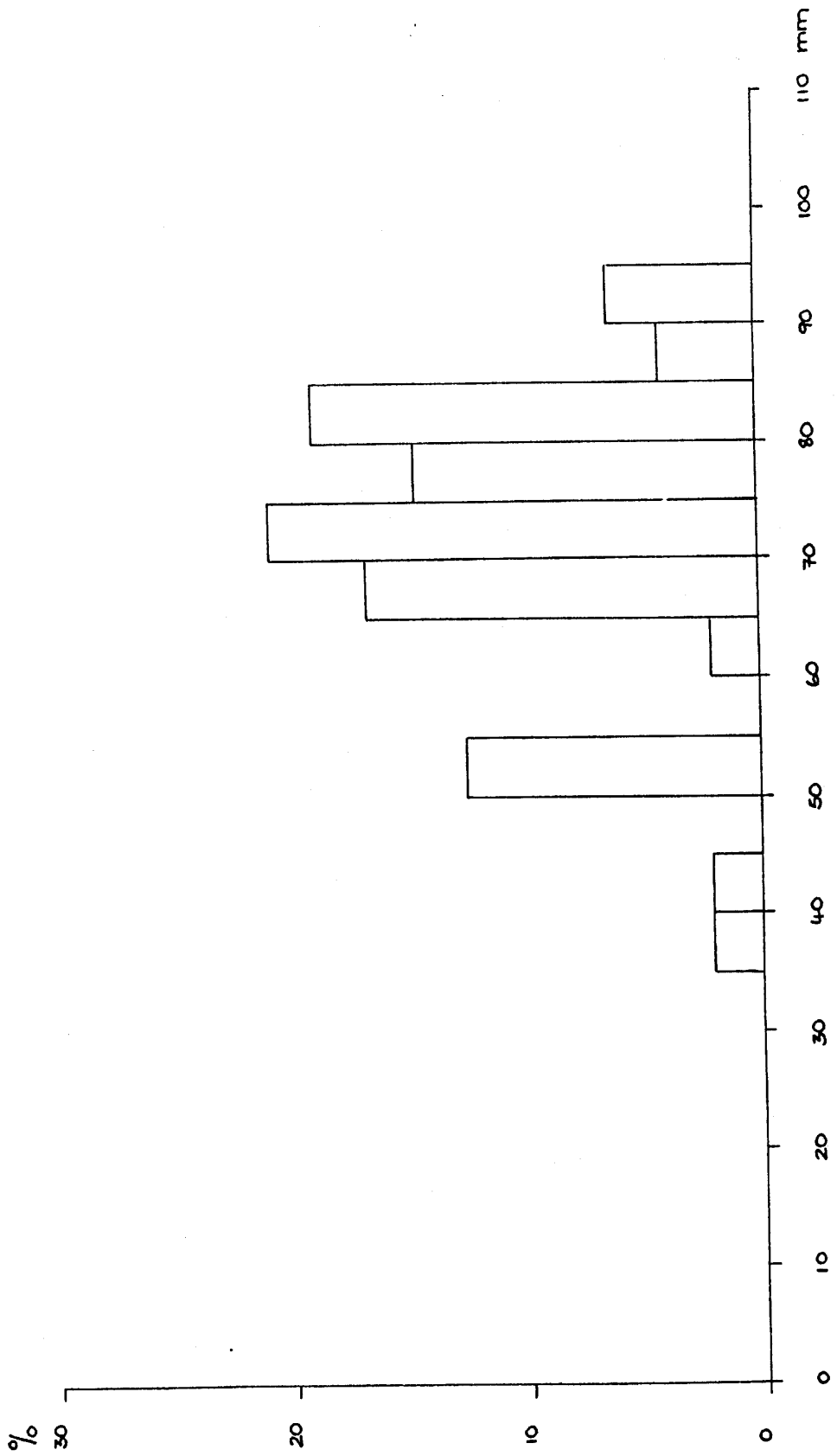
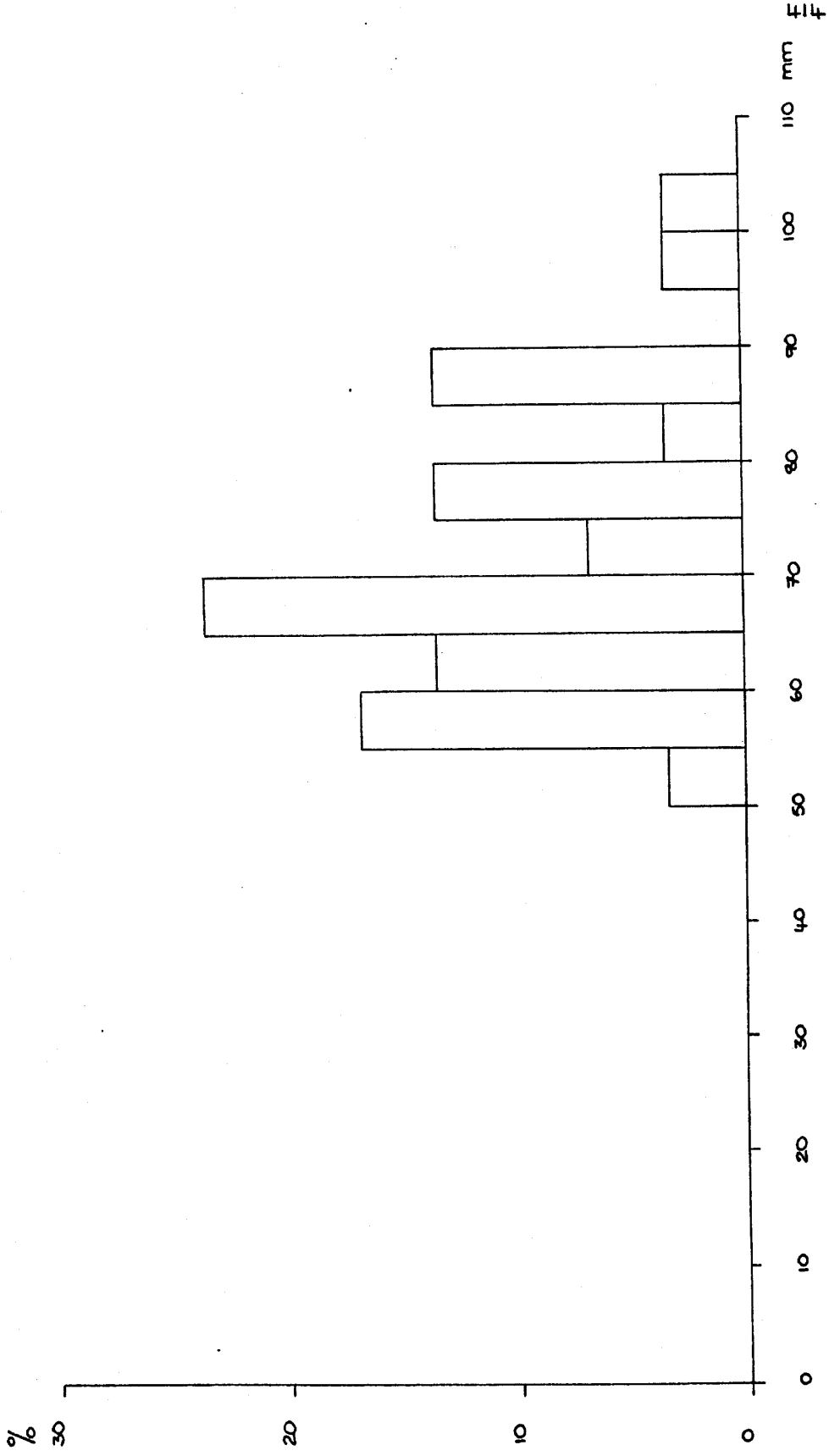


FIGURE 5.13 OMSLE 10 SIZE FREQUENCY OF OYSTER SHELLS RVMW N = 48



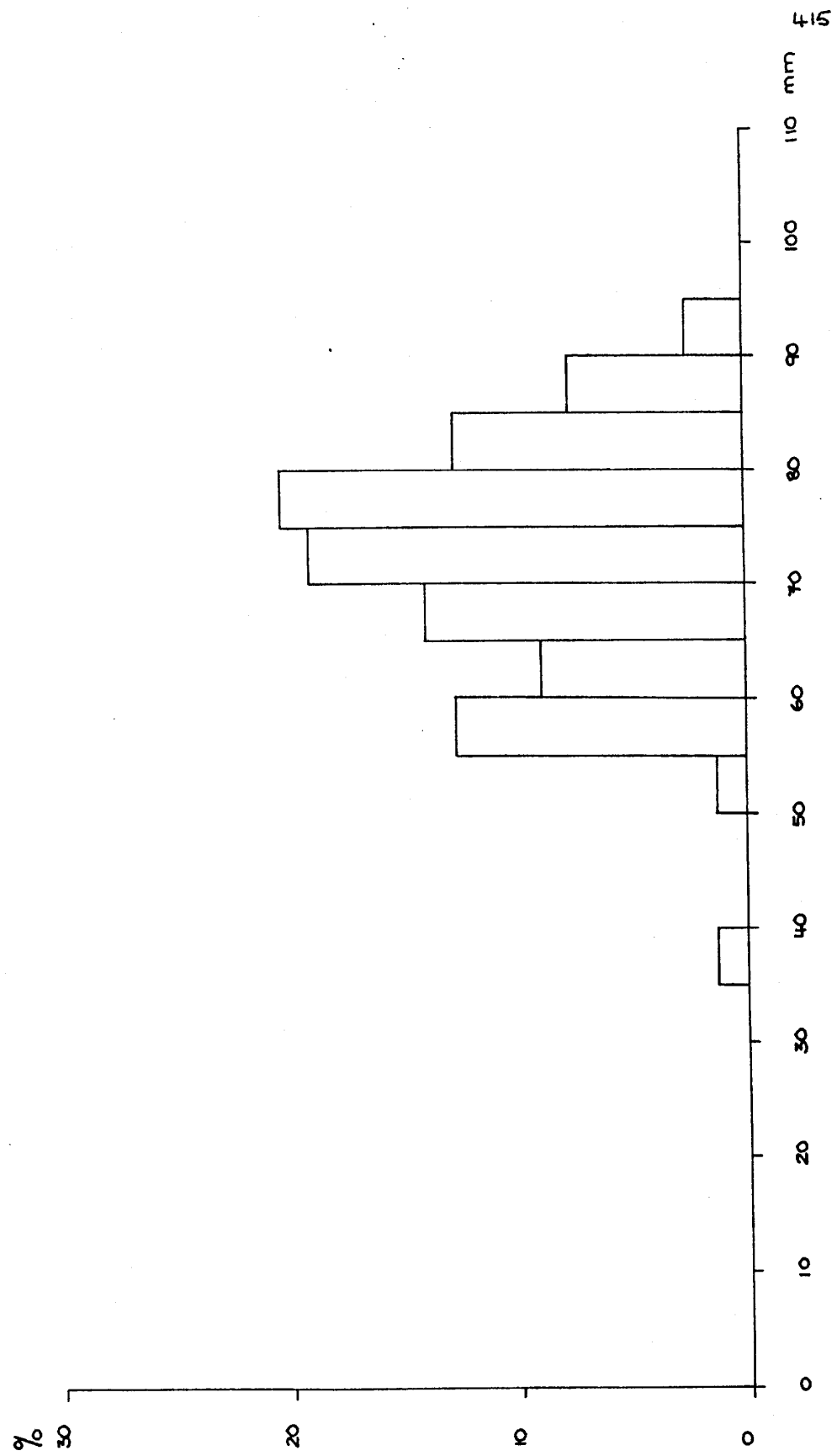
5.14

Figure 5.14 OWSLE II SIZE FREQUENCY OF OYSTER SHELLS RVMW n = 30



5.15

Figure 5.15 OWSLE 12 SIZE FREQUENCY OF OYSTER SHELLS RYMW N=79



5.17

Figure 5.17 OWSLE 14 SIZE FREQUENCY OF OYSTER SHELLS RYMAN $n = 258$

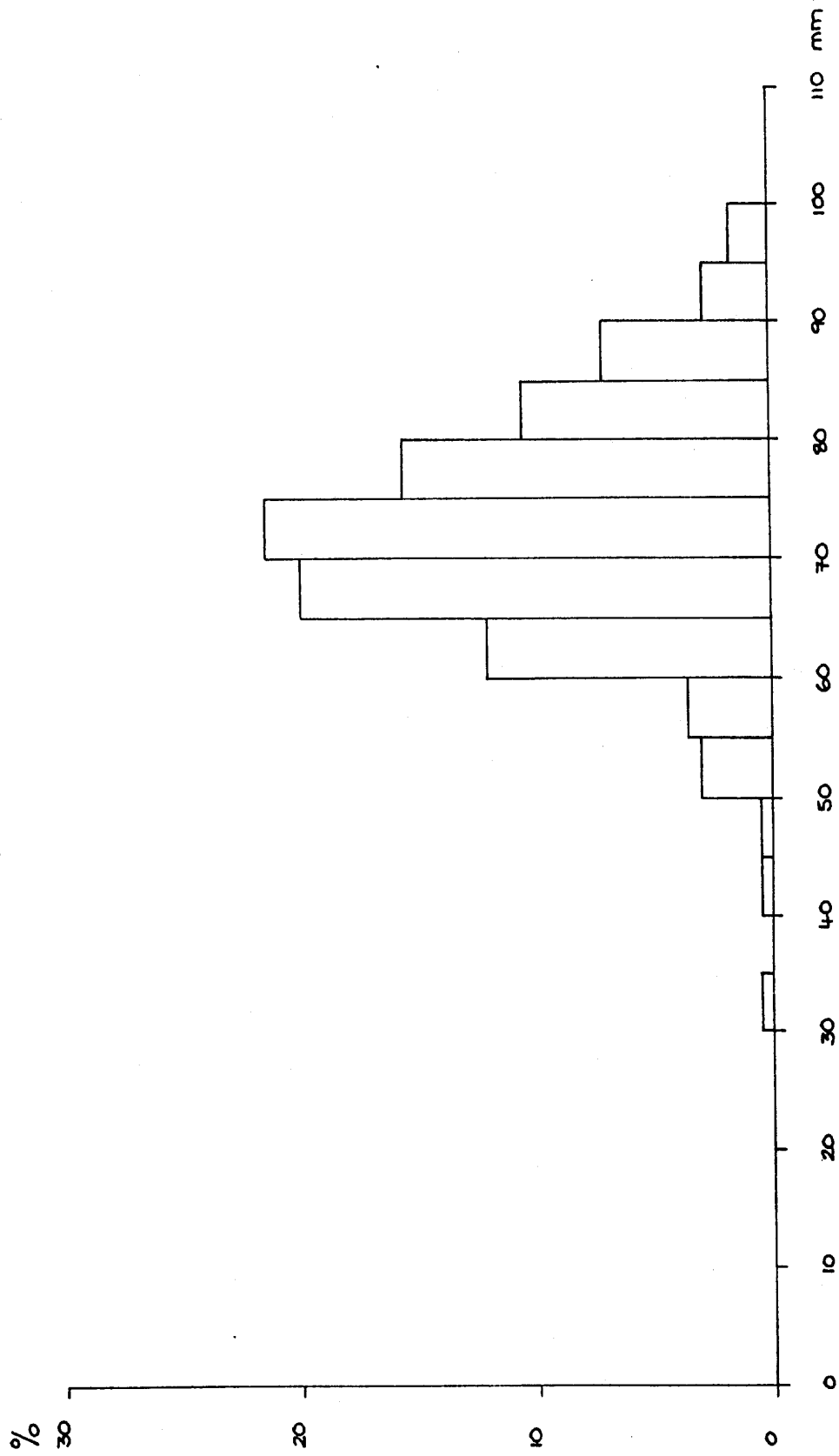
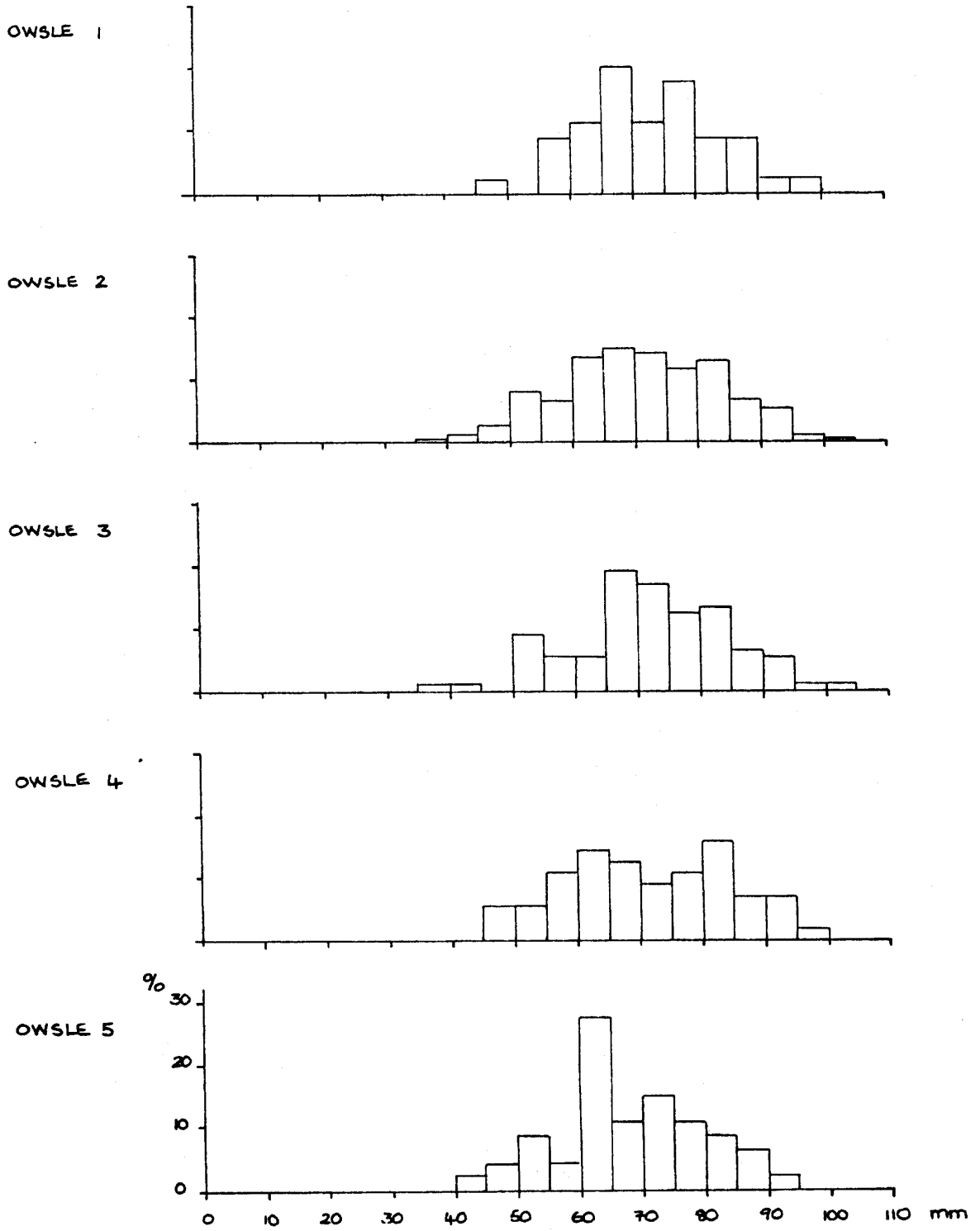


Figure 5.18

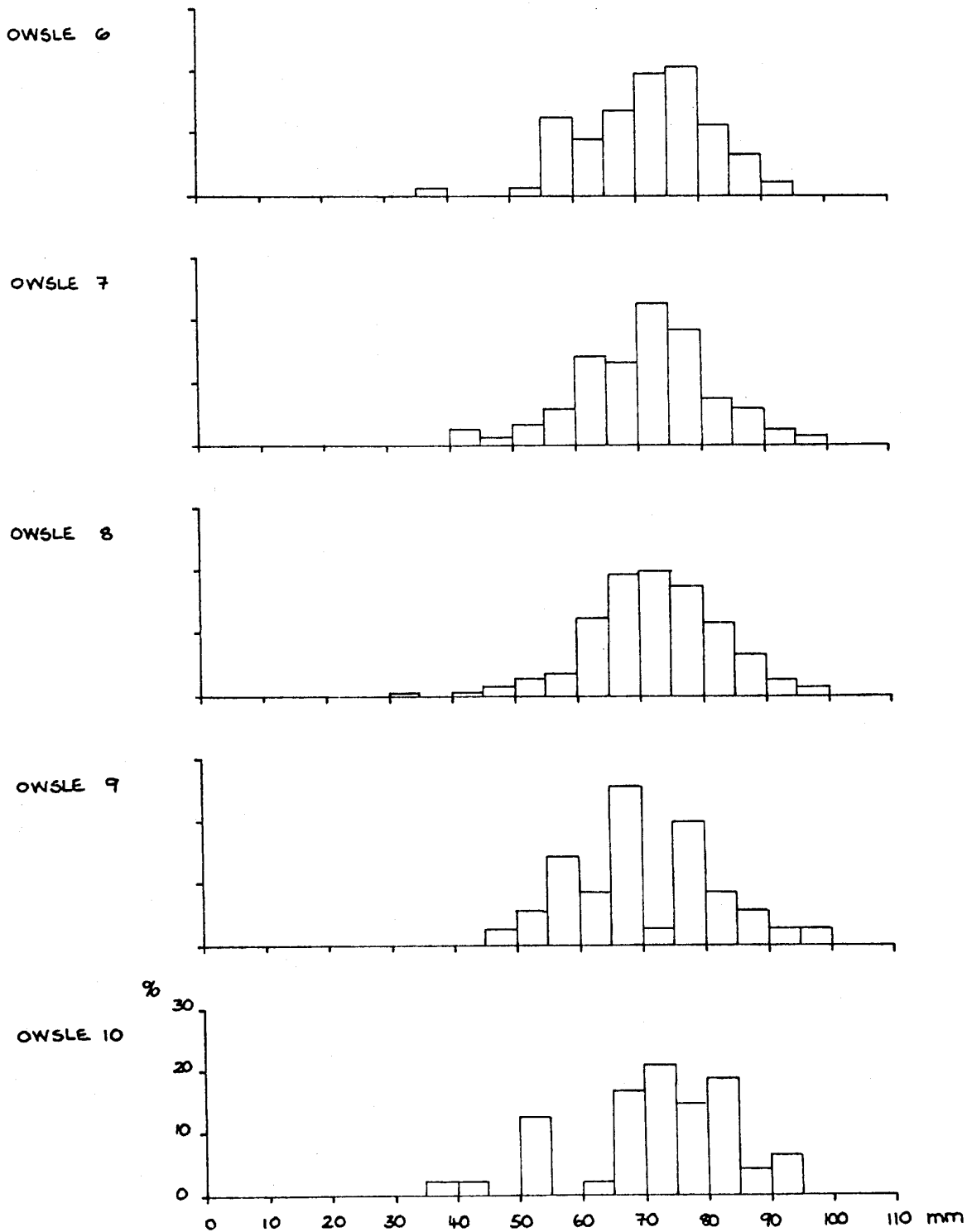
Size frequency of oyster shells . OWSLEBURY RVMW



5.18

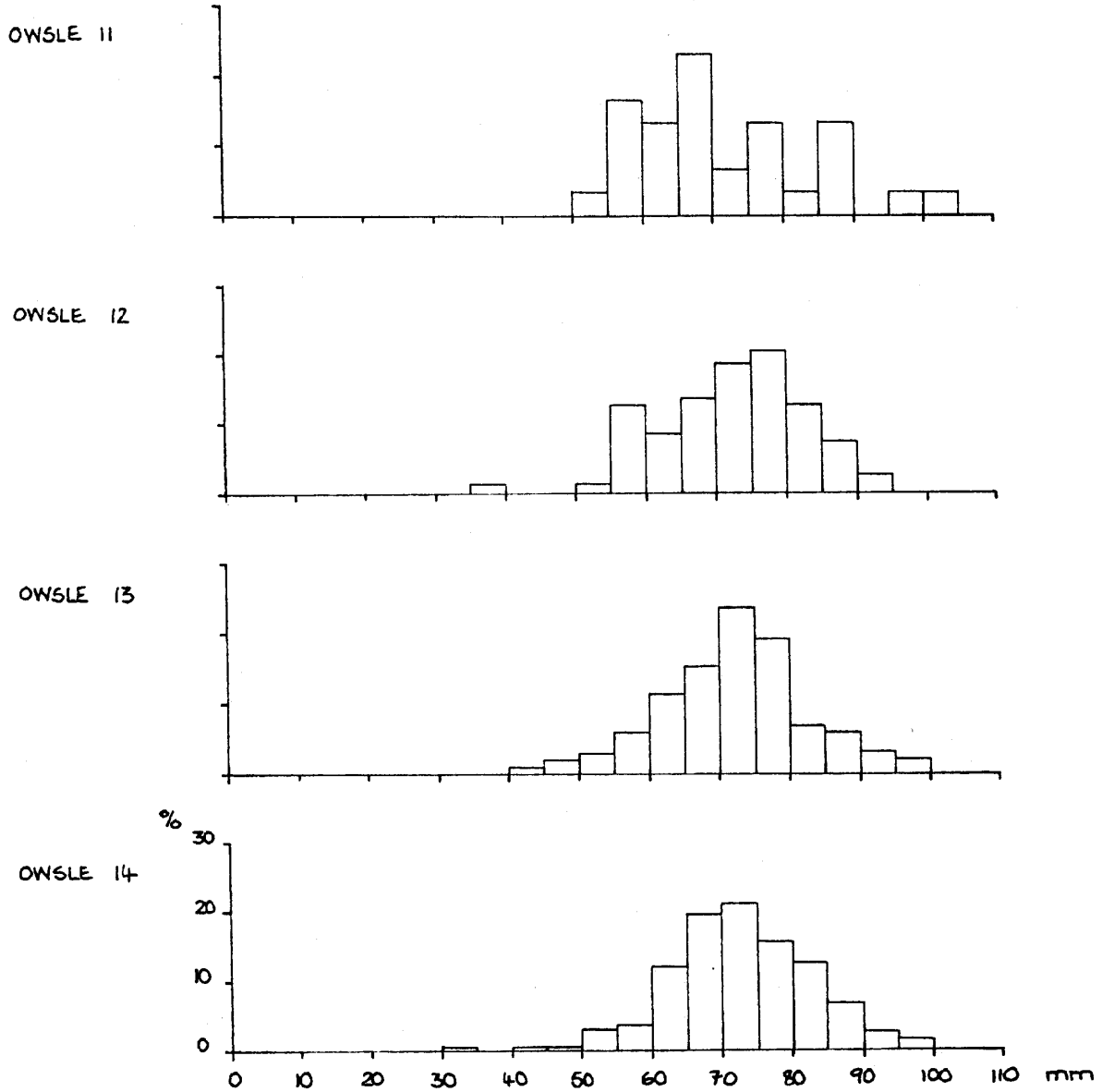
Figure 5.19

Size frequency of oyster shells



5.19

Figure 520
 Size frequency of oyster shells



5.20

5.23

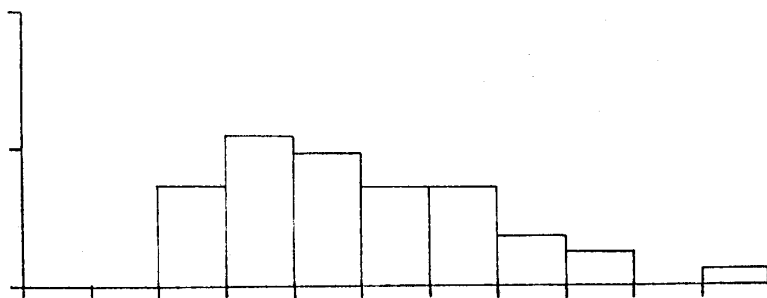
ANALYSIS OF VARIANCE

LEVEL	N	MEAN	STDEV	INDIVIDUAL 95 PCT CI'S FOR MEAN BASED ON POOLED STDEV
ows1e.1	44	71.52	10.74	(--*--)
ows1e.2	191	70.07	12.53	(*--)
ows1e.3	88	71.50	12.61	(--*--)
ows1e.4	56	70.82	12.95	(--*--)
ows1e.5	47	66.51	11.41	(--*--)
ows1e.6	86	71.01	9.98	(--*--)
ows1e.7	119	70.16	10.96	(*--)
ows1e.8	316	71.70	10.29	(*--)
ows1e.9	35	69.37	12.23	(--*--)
ows1e.10	48	71.31	12.37	(--*--)
ows1e.11	30	70.67	12.93	(--*--)
ows1e.12	79	71.15	10.19	(--*--)
ows1e.13	98	70.93	10.49	(--*--)
ows1e.14	258	71.95	9.97	(*--)
POOLED STDEV =		12.22		

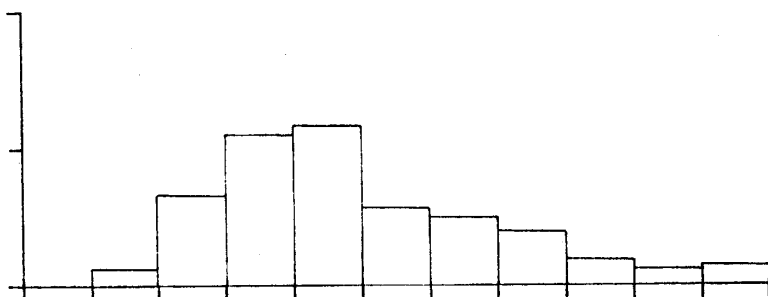
Figure 5.23 Owslebury: Analysis of variance for oyster size

Figure 5.24 Age distributions of oyster shells in Owslebury samples

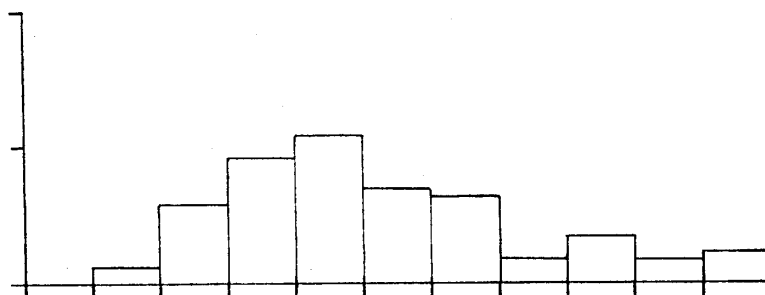
OWSLE 1 n = 41



OWSLE 2 n = 159



OWSLE 3 n = 86



% OWSLE 4 n = 53

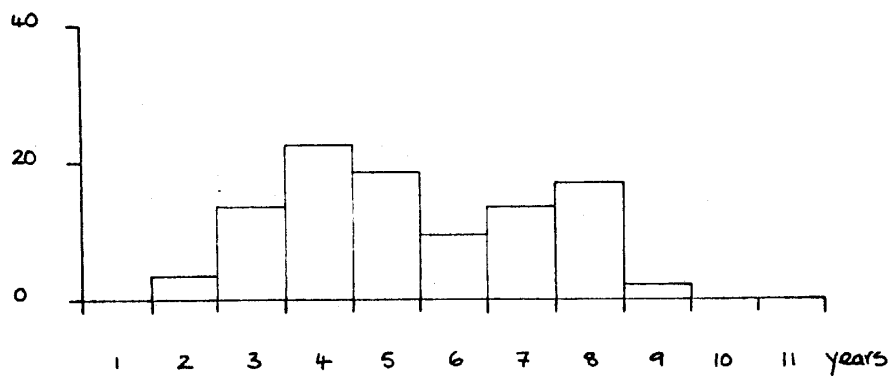
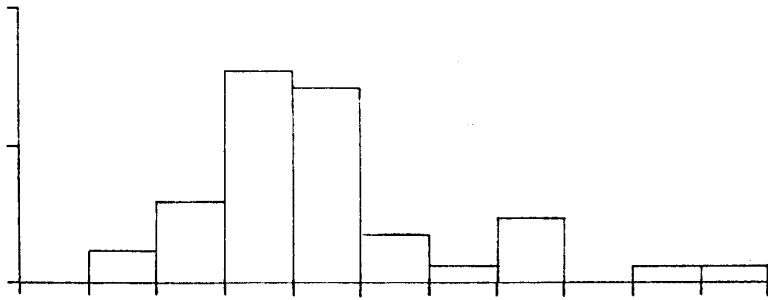
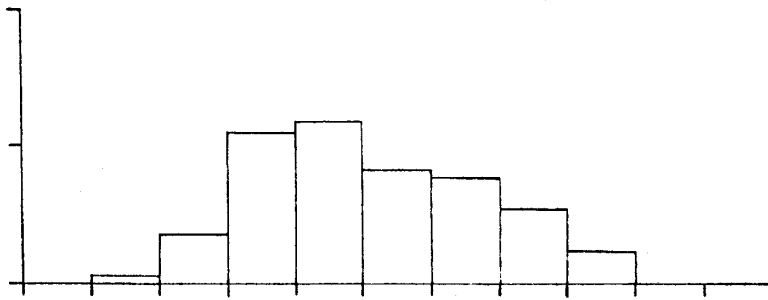


Figure 5.25 Age distributions of oyster shells in Owslebury samples 424

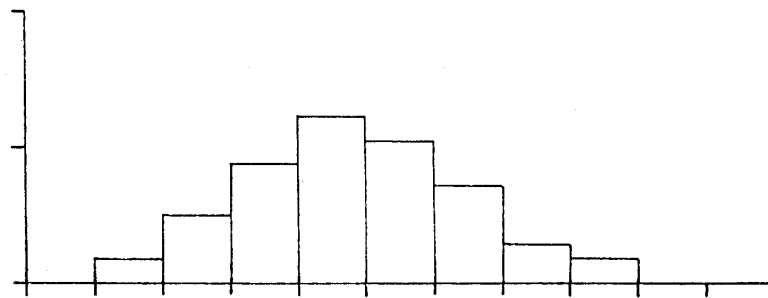
OWSLE 5 n = 42



OWSLE 6 n = 86



OWSLE 7 n = 110



% OWSLE 8 n = 300

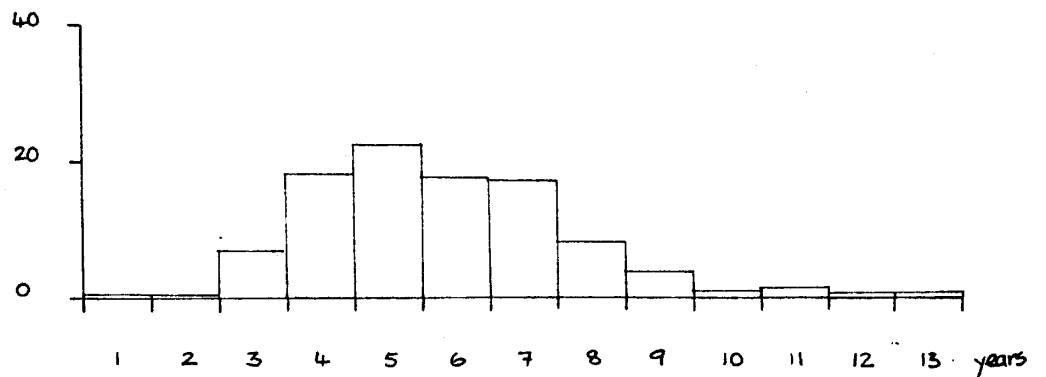
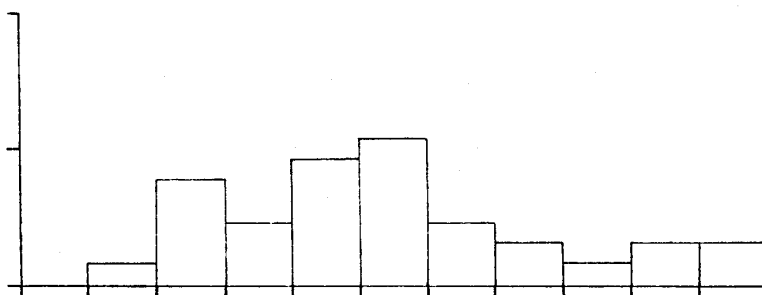
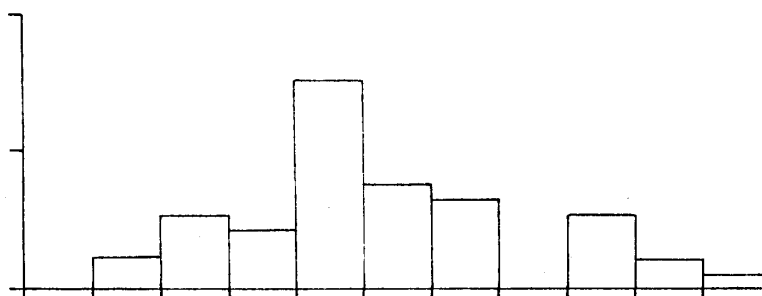


Figure 5.26 Age distributions of oyster shells in Owslebury samples

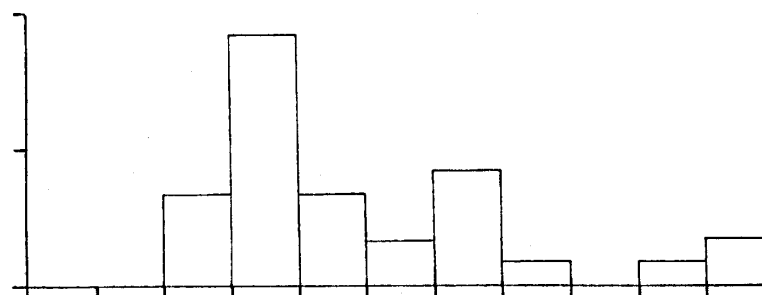
OWSLE 9 n = 32



OWSLE 10 n = 46



OWSLE 11 n = 30



% OWSLE 12 n = 79

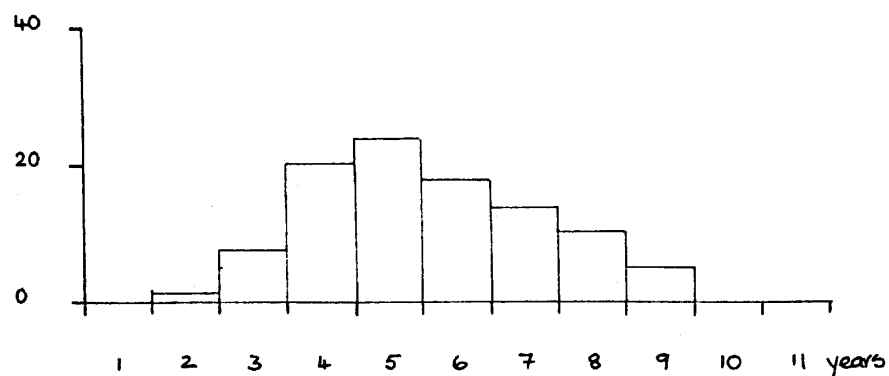


Figure 5.27 Age distributions of oyster shells in Owslebury samples

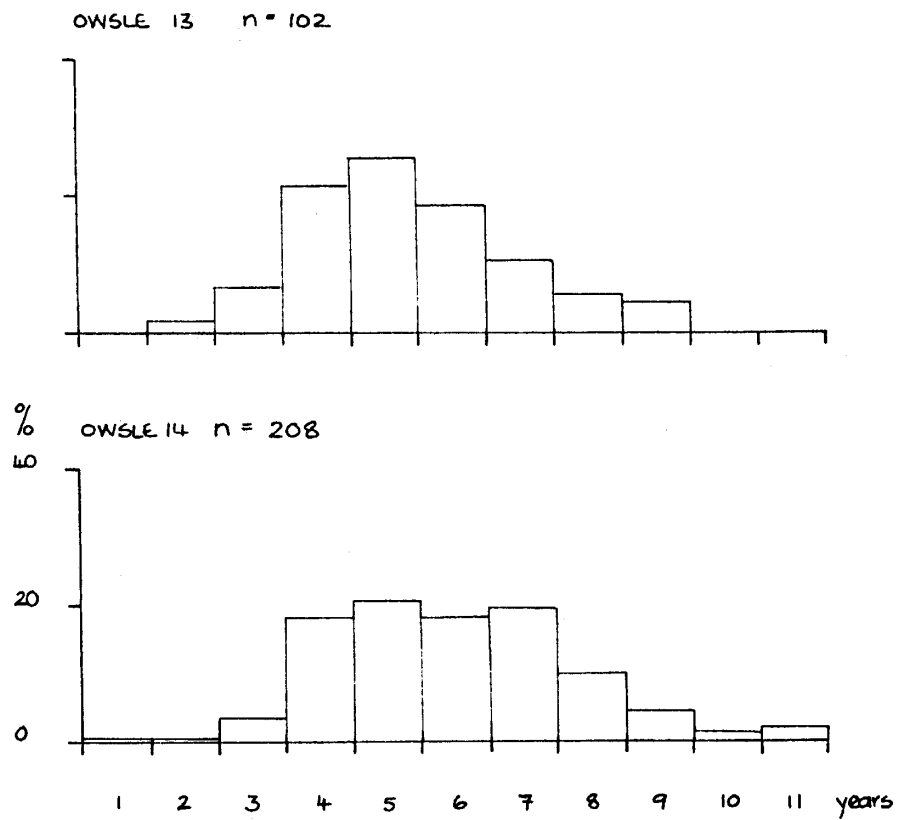


Figure 5.28

GROWTH RATE OF OYSTER SHELLS FROM OWSLE I n = 44

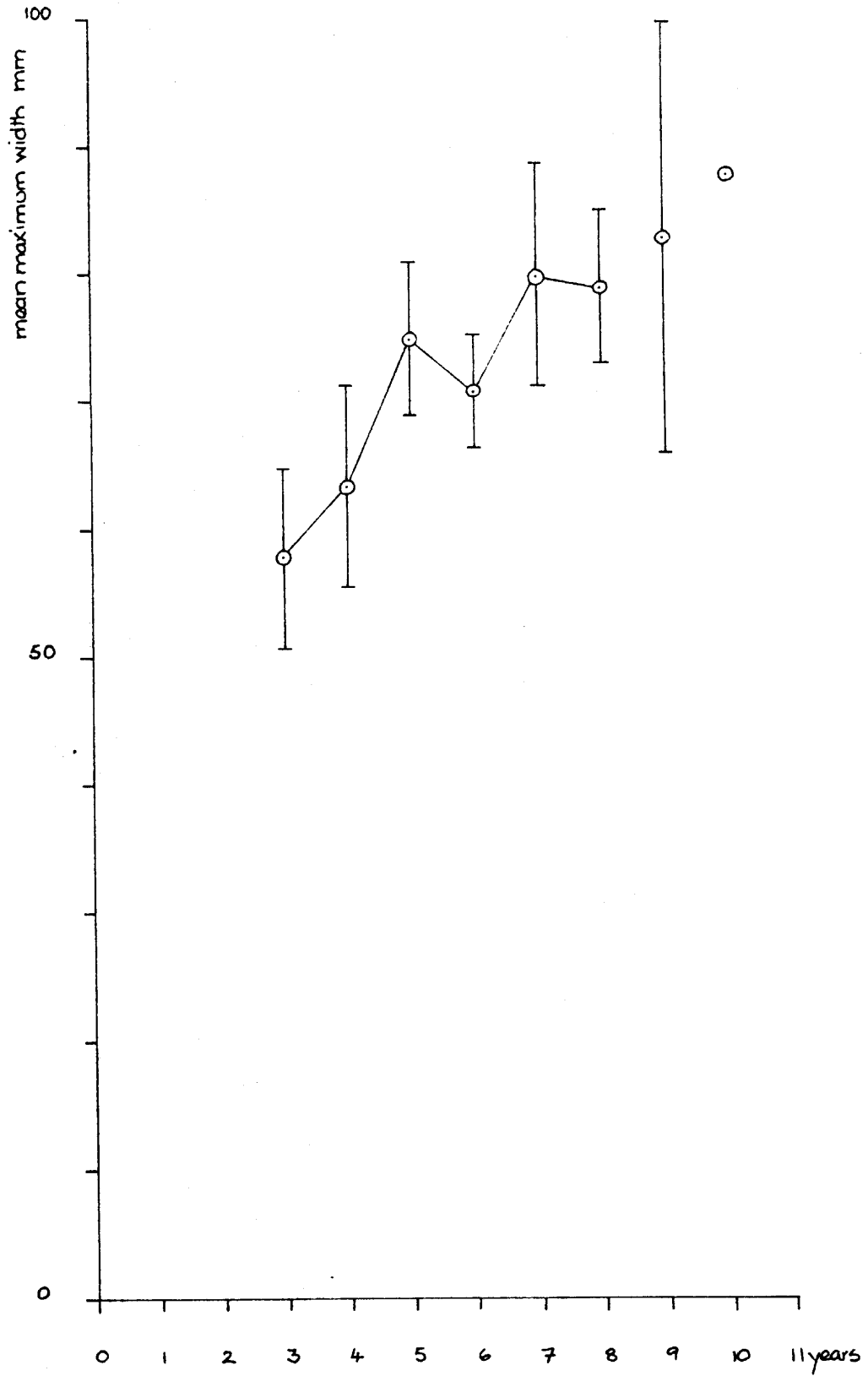


Figure 5.29

GROWTH RATE OF OYSTER SHELLS FROM OWSLE 2 n = 159

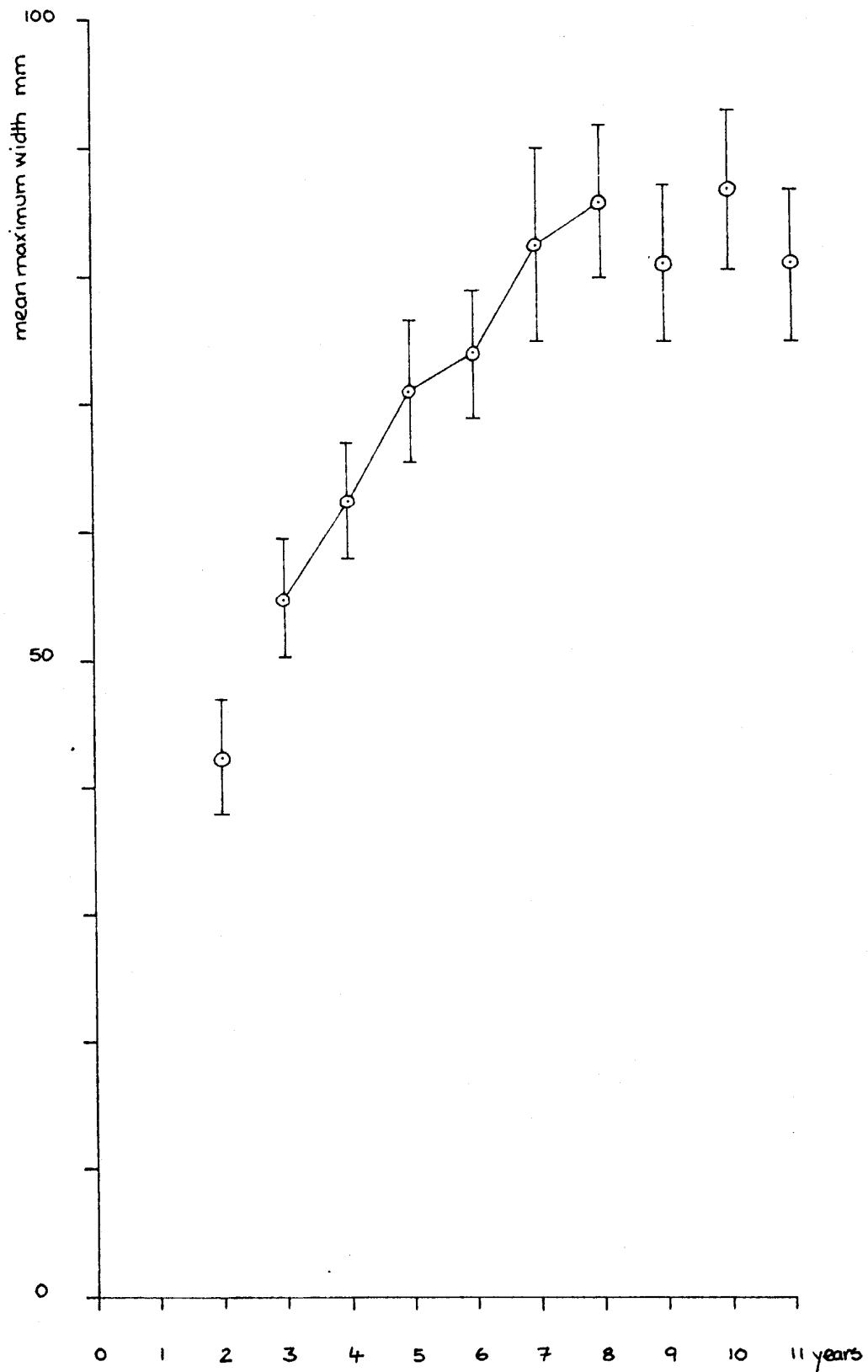


Figure 5.30

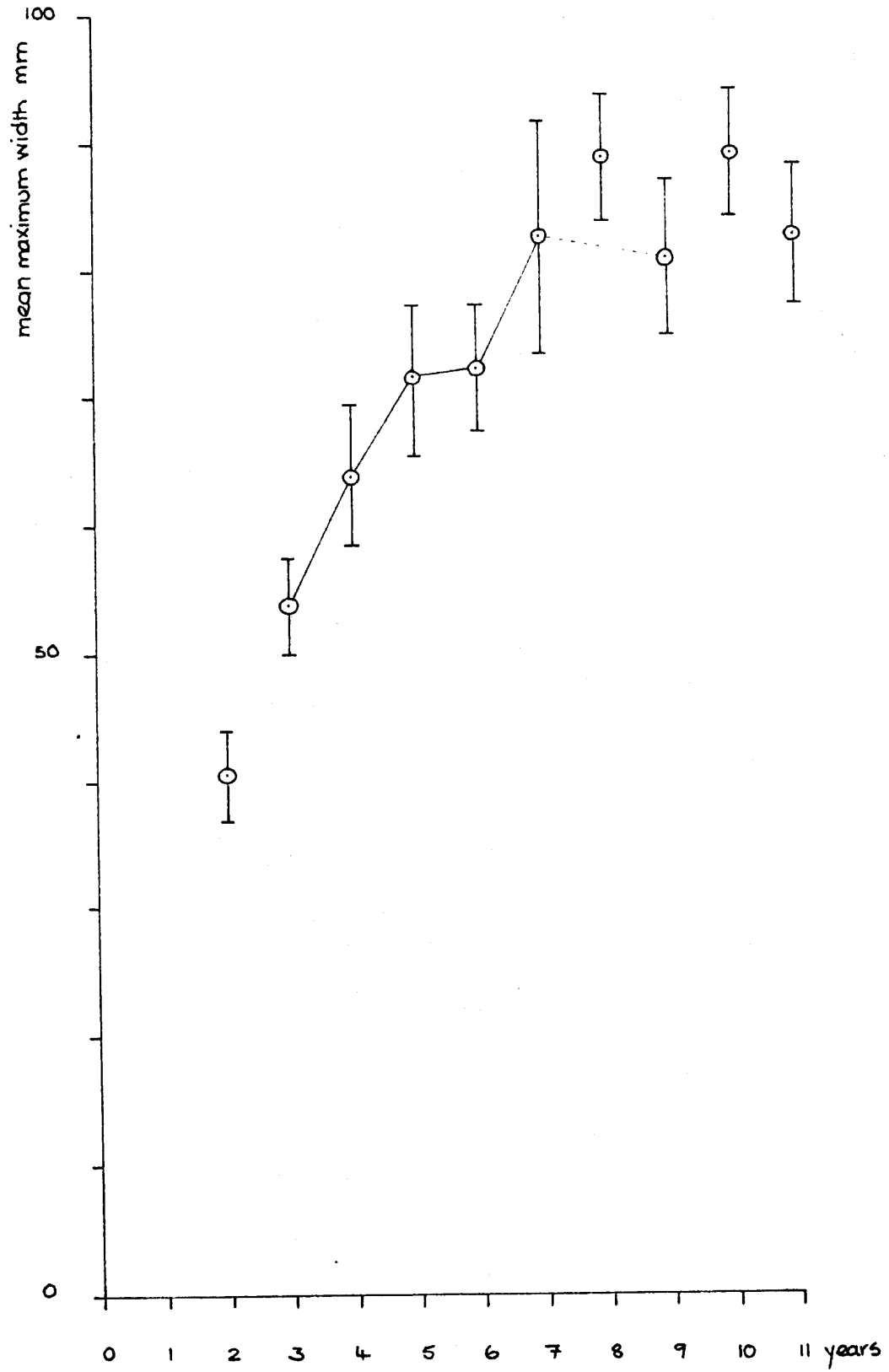
GROWTH RATE OF OYSTER SHELLS FROM OWSLE 3 $n = 86$ 

Figure 5.31

GROWTH RATE OF OYSTERS SHELLS FROM OWSLE4 n=53

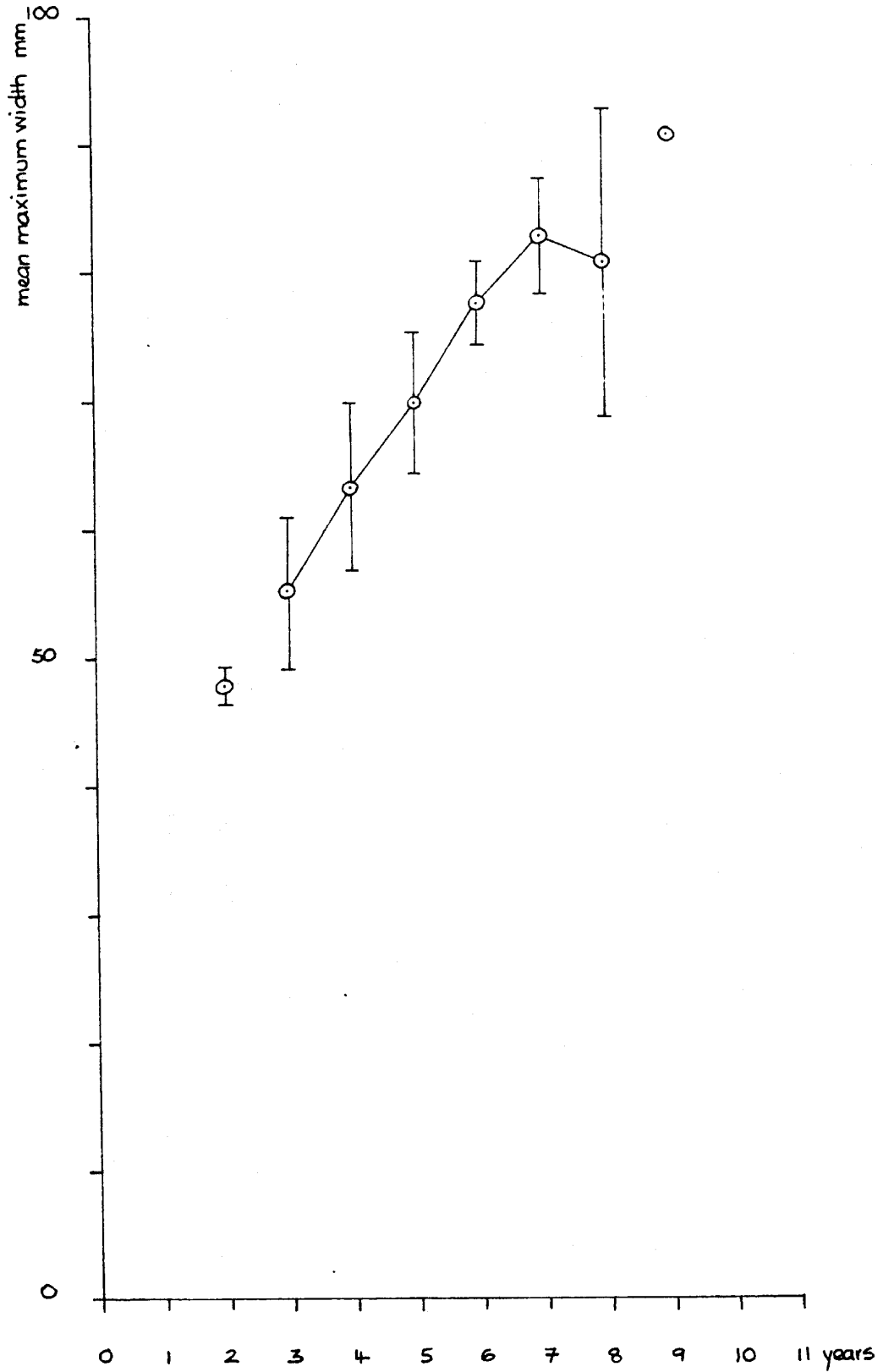


Figure 5.32

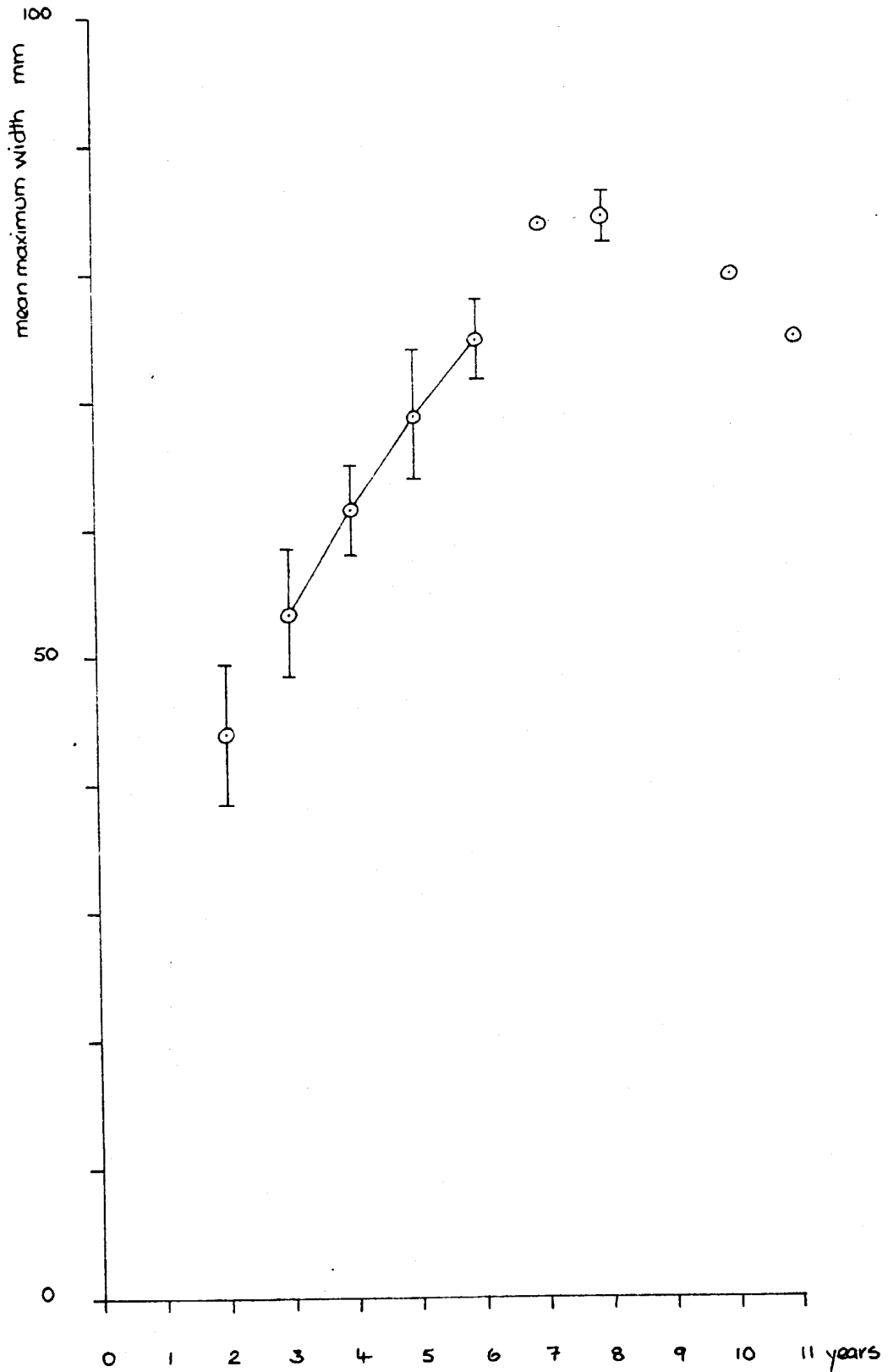
GROWTH RATE OF OYSTER SHELLS FROM OWSLE 5 $n=42$ 

Figure 5.33

GROWTH RATE OF OYSTER SHELLS FROM OWSLE 6 n = 86

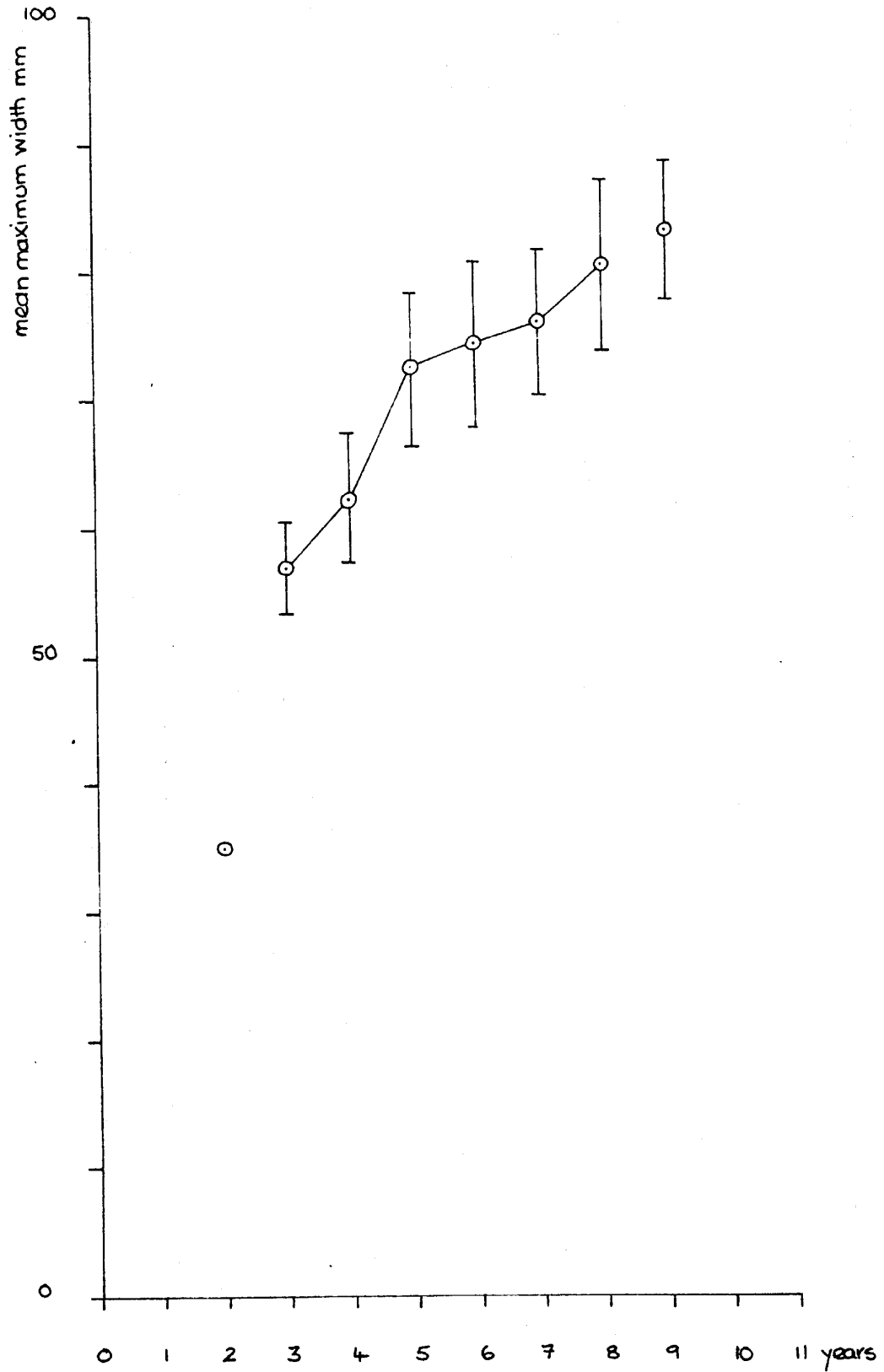


Figure 5.34

GROWTH RATE OF OYSTER SHELLS FROM OWSLE 7 n = 110

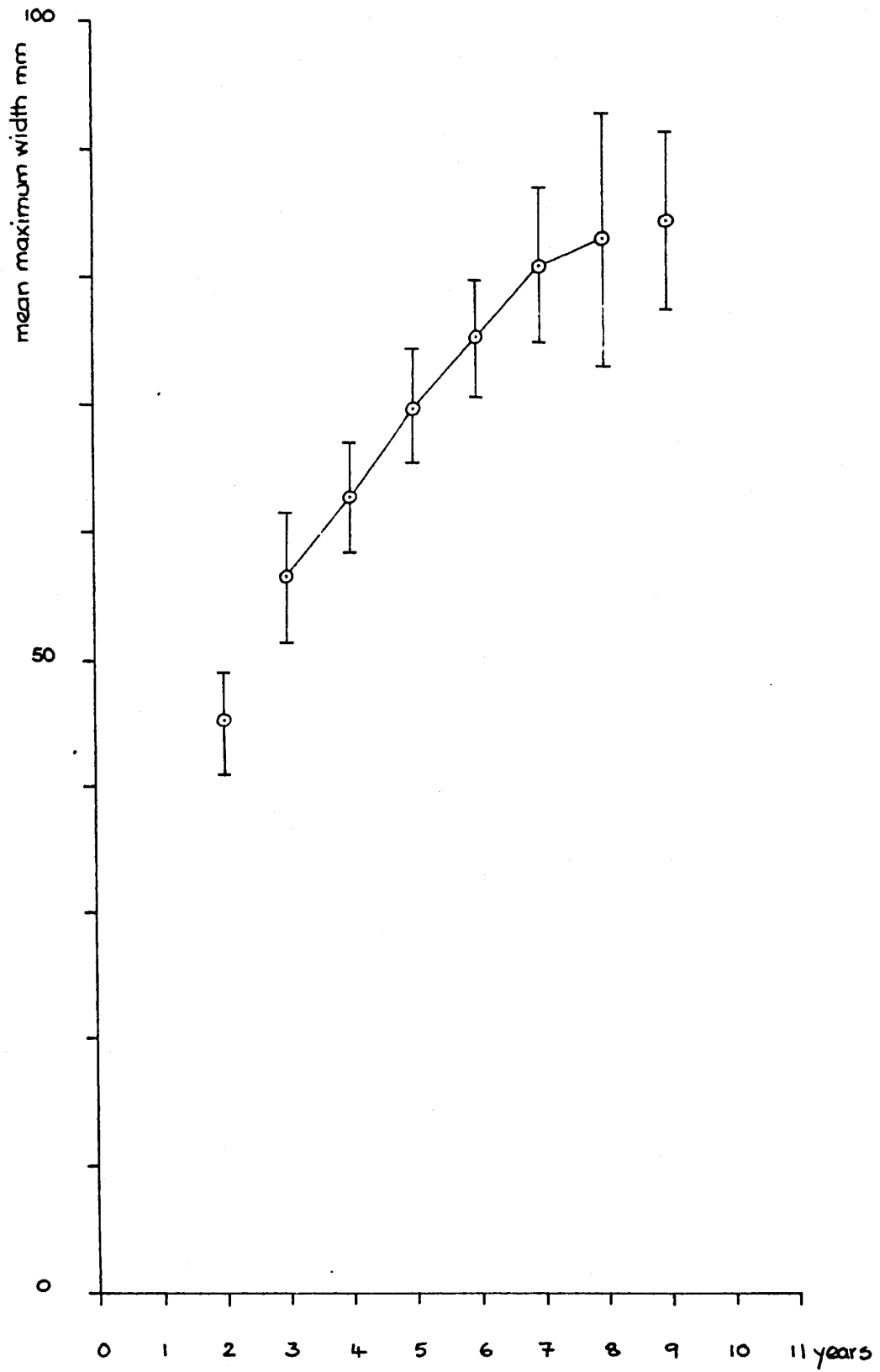


Figure 5.35

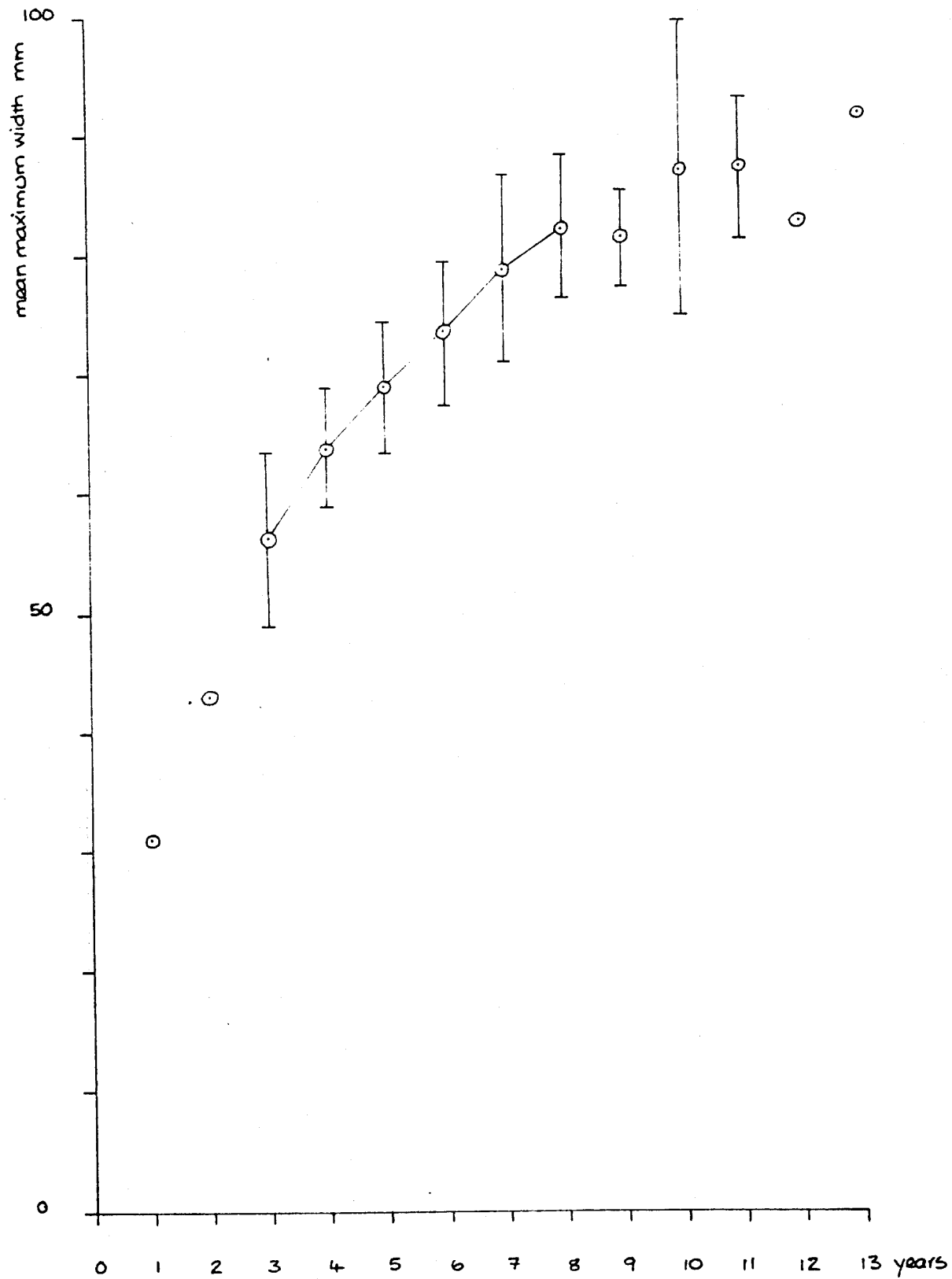
GROWTH RATE OF OYSTER SHELLS FROM OWSLE 8 $n = 300$ 

Figure 5.36

GROWTH RATE OF OYSTER SHELLS FROM OWSLE 9 n= 32

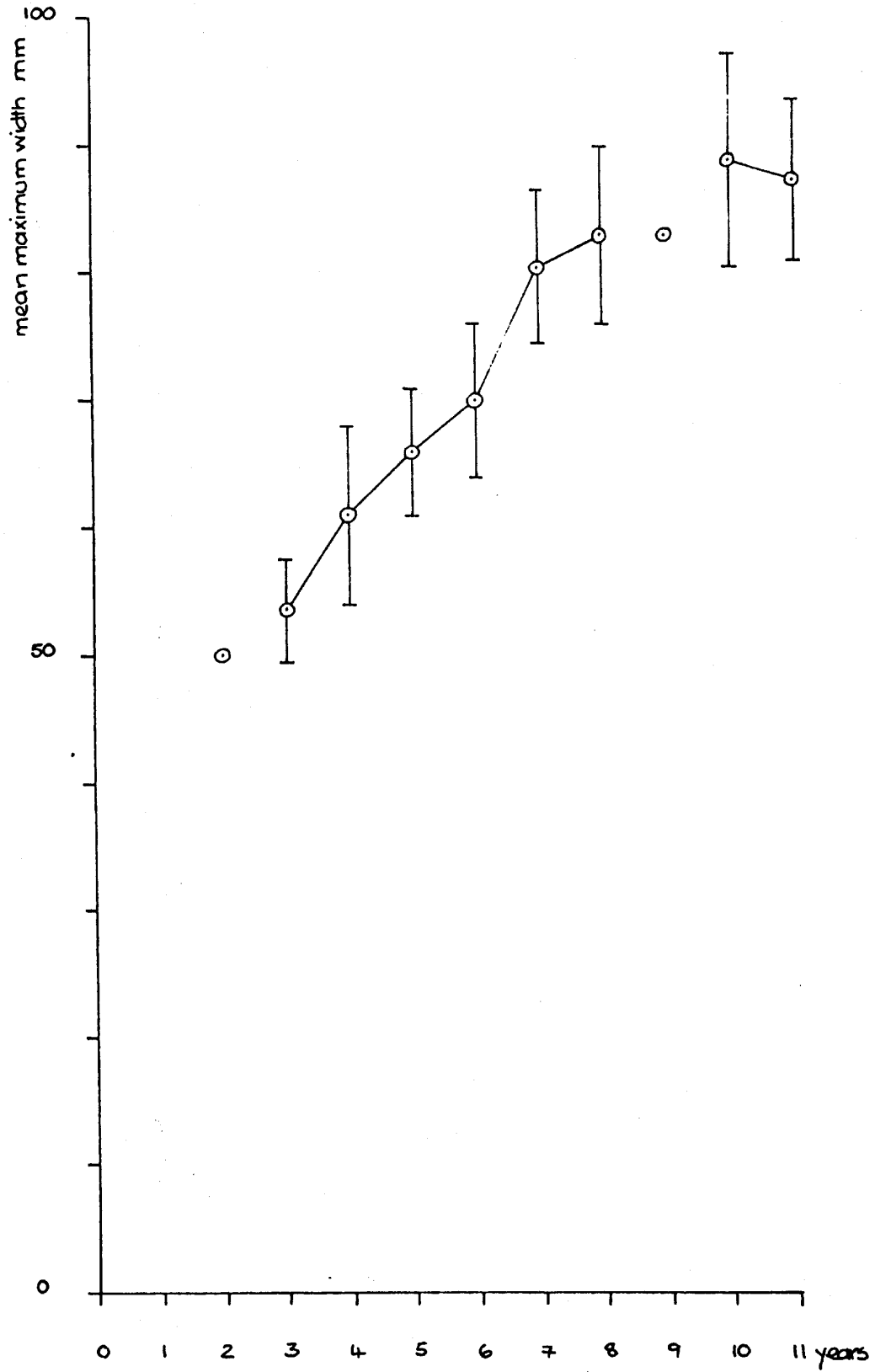


Figure 5.37

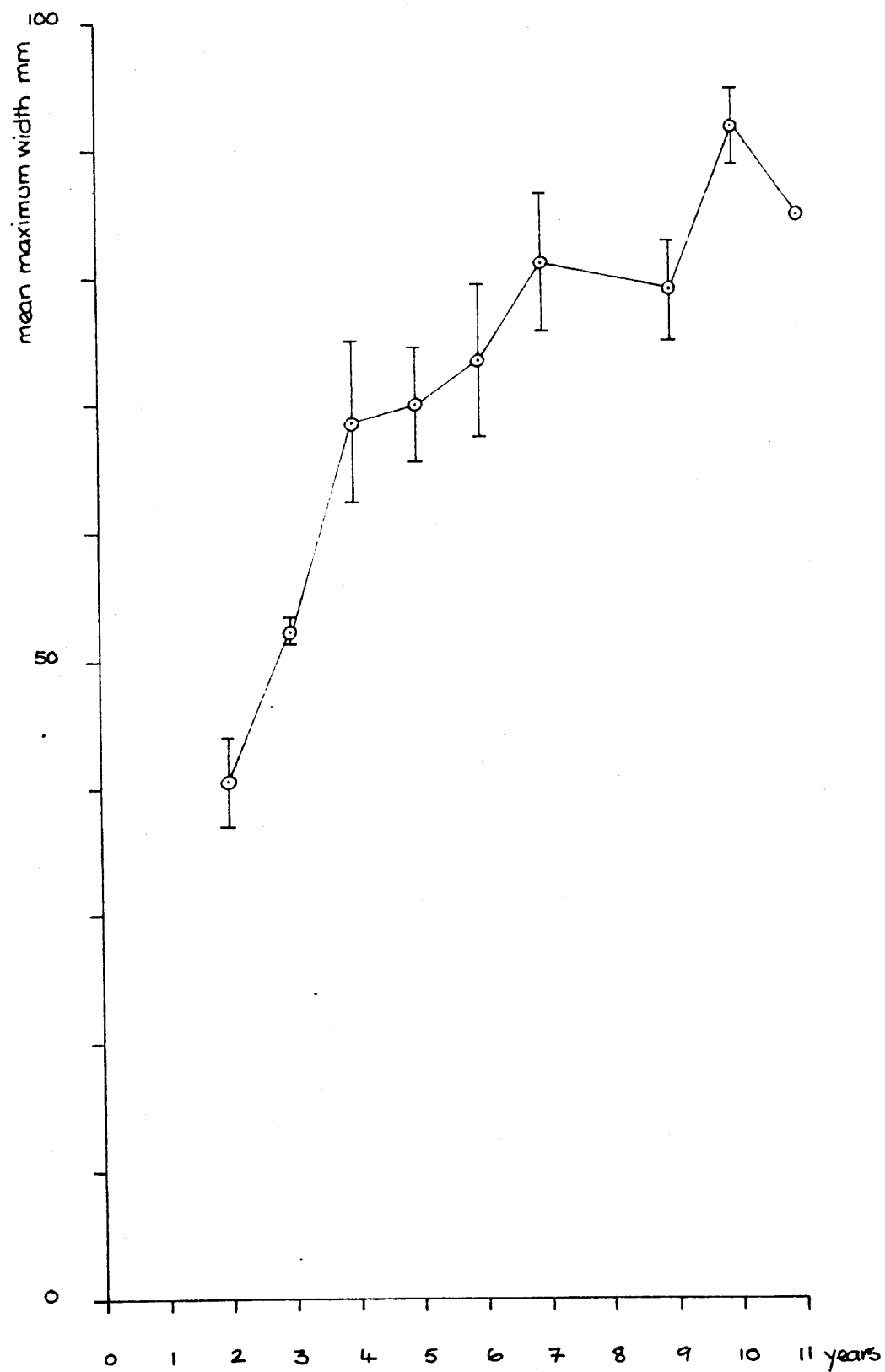
GROWTH RATE OF OYSTER SHELLS FROM OWSLE 10 $n = 46$ 

Figure 5.38

GROWTH RATE OF OYSTER SHELLS FROM OWSLE 11 n = 30

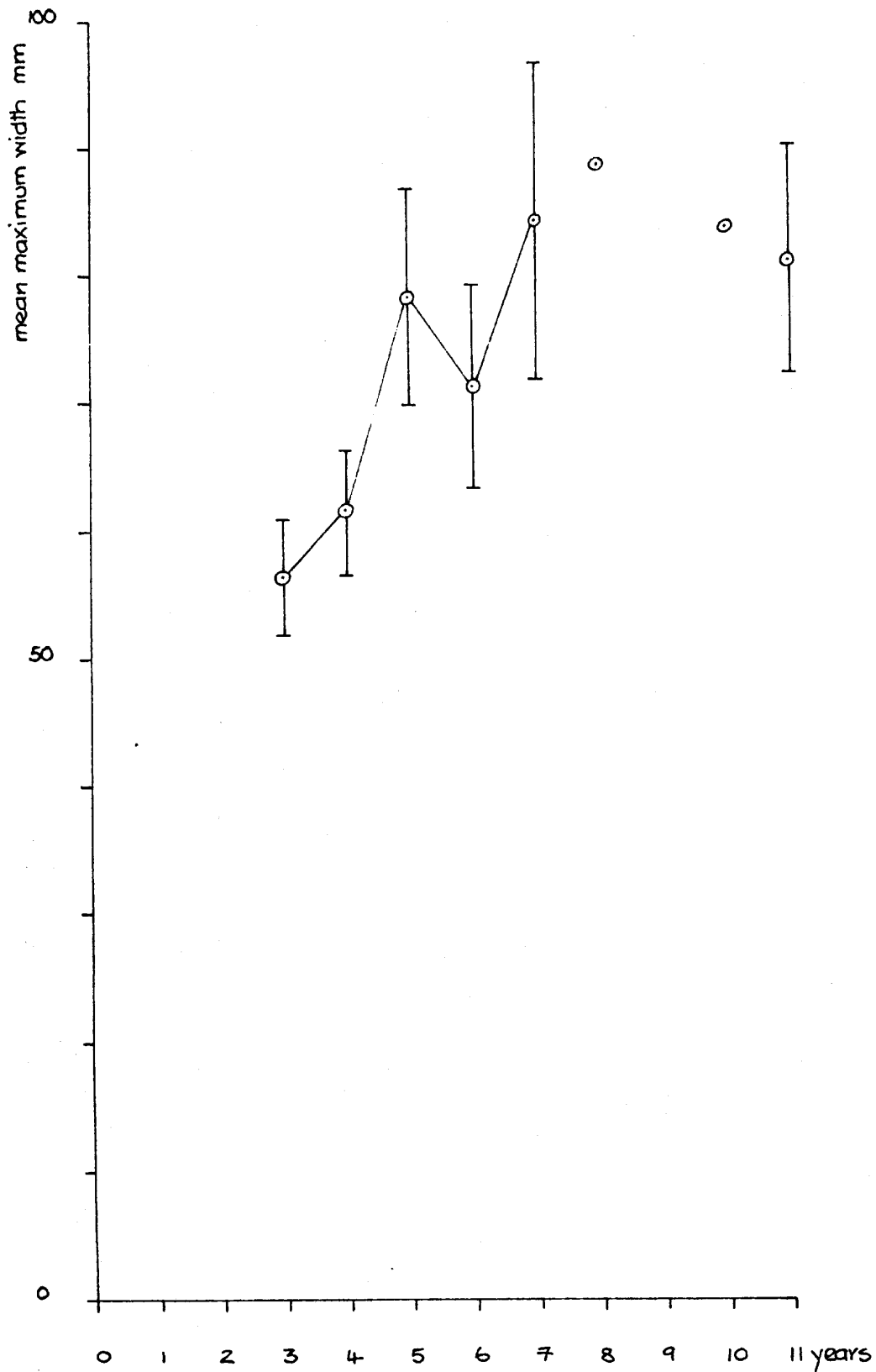


Figure 5.39

GROWTH RATE OF OYSTER SHELLS FROM OWSLE 12 n = 79

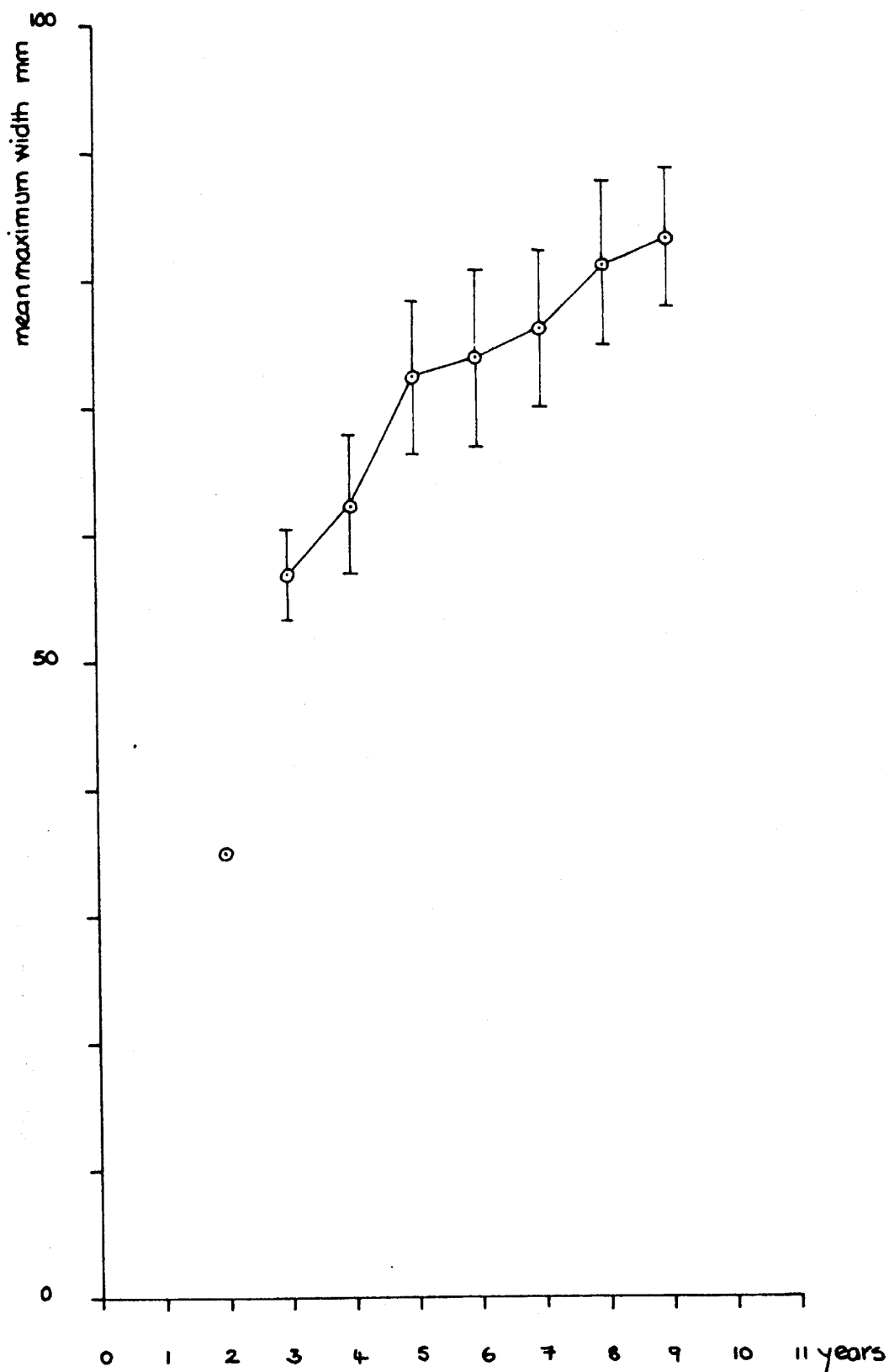


Figure 5.40

GROWTH RATE OF OYSTER SHELLS FROM ONSLE 13 n = 102

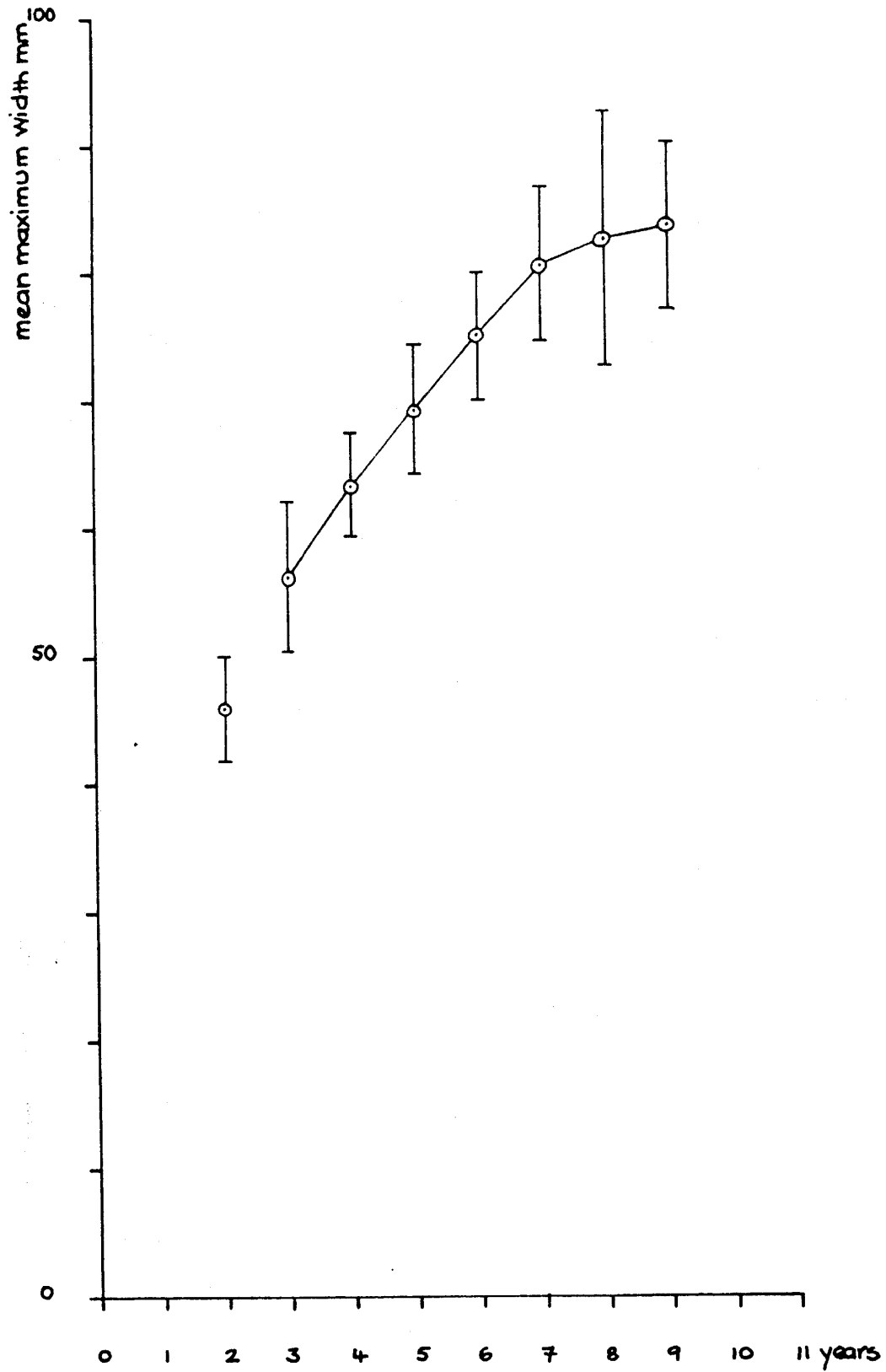


Figure 5.41

GROWTH RATE OF OYSTER SHELLS FROM OWSLE 14 n = 208

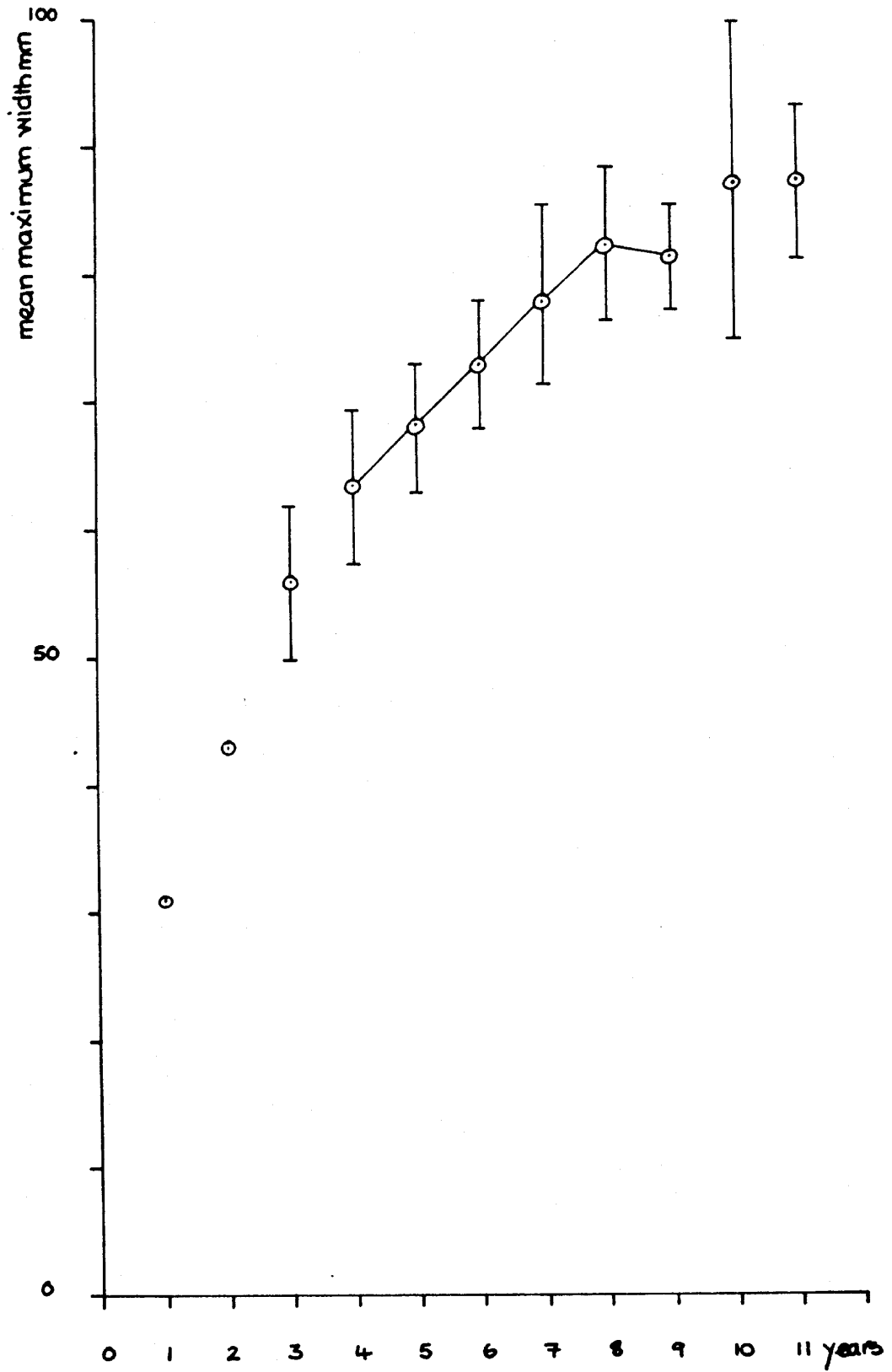


Table 5.4

OWSLEBURY - SUMMARY OF INFESTATION DATA FROM OYSTER SHELLS
(RIGHT AND LEFT VALVES COMBINED RESULTS)

	number	<i>Rhyacionia ciliata</i> % sample affected	<i>Rhyacionia hoptuna</i> % affected	<i>Cliona celata</i> % affected	<i>Cliona celata</i> % affected	Carbonous htr % affected	Barnacles % affected	Polysia % affected	Bore holes % affected	vii % affected
OWSLE 1 (all bc)	80	27 33.75	8 10.00	0 0	0 0	0 0	0 0	0 0	0 0	1 1.25
OWSLE 2 (all 1st ad)	330	148 44.85	37 12.57	5 1.52	4 1.21	0 0	0 0	2 0.61	10 3.03	
OWSLE 3 (mid 1st ad)	151	63 41.72	18 11.92	2 1.32	4 2.65	0 0	0 0	0 0	4 2.65	
OWSLE 4 (late 1st ad)	70	27 38.57	7 10.00	0 0	0 0	0 0	0 0	0 0	2 2.86	
OWSLE 5 (1st ad)	75	37 49.33	10 14.29	3 4.00	0 0	0 0	0 0	2 2.67	4 5.33	
OWSLE 6 (2nd ad)	161	54 33.54	22 13.67	3 1.86	0 0	0 0	0 0	0 0	5 3.11	
OWSLE 7 (2nd 3rd ad)	217	69 31.8	22 10.14	2 0.92	0 0	0 0	1 0.46	0 0	5 2.30	
OWSLE 8 (3rd 4th ad)	589	194 34.71	44 7.87	12 2.15	0 0	0 0	0 0	0 0	27 4.83	
OWSLE 9 (4th ad)	60	13 21.67	9 15.00	2 3.33	2 3.33	0 0	0 0	1 1.67	4 6.67	
OWSLE 10 (4+2 mid 1st ad)	84	30 35.71	14 16.67	2 2.38	4 4.76	0 0	0 0	0 0	2 3.38	
OWSLE 11 (4+2 late 1st ad)	53	25 47.17	4 7.55	0 0	0 0	0 0	0 0	0 0	2 3.77	
OWSLE 12 (4+2 2nd ad)	144	49 34.08	19 13.19	2 1.39	0 0	0 0	0 0	0 0	5 3.47	
OWSLE 13 (4+2 3rd ad)	185	62 33.51	20 10.81	0 0	0 0	0 0	1 0.54	0 0	4 2.16	
OWSLE 14 (4+2 3rd 4th ad)	462	157 38.98	36 7.86	12 2.60	0 0	0 0	0 0	0 0	26 5.63	

Figure 5.42 Rates of infestation in oyster shell samples from Owslebury

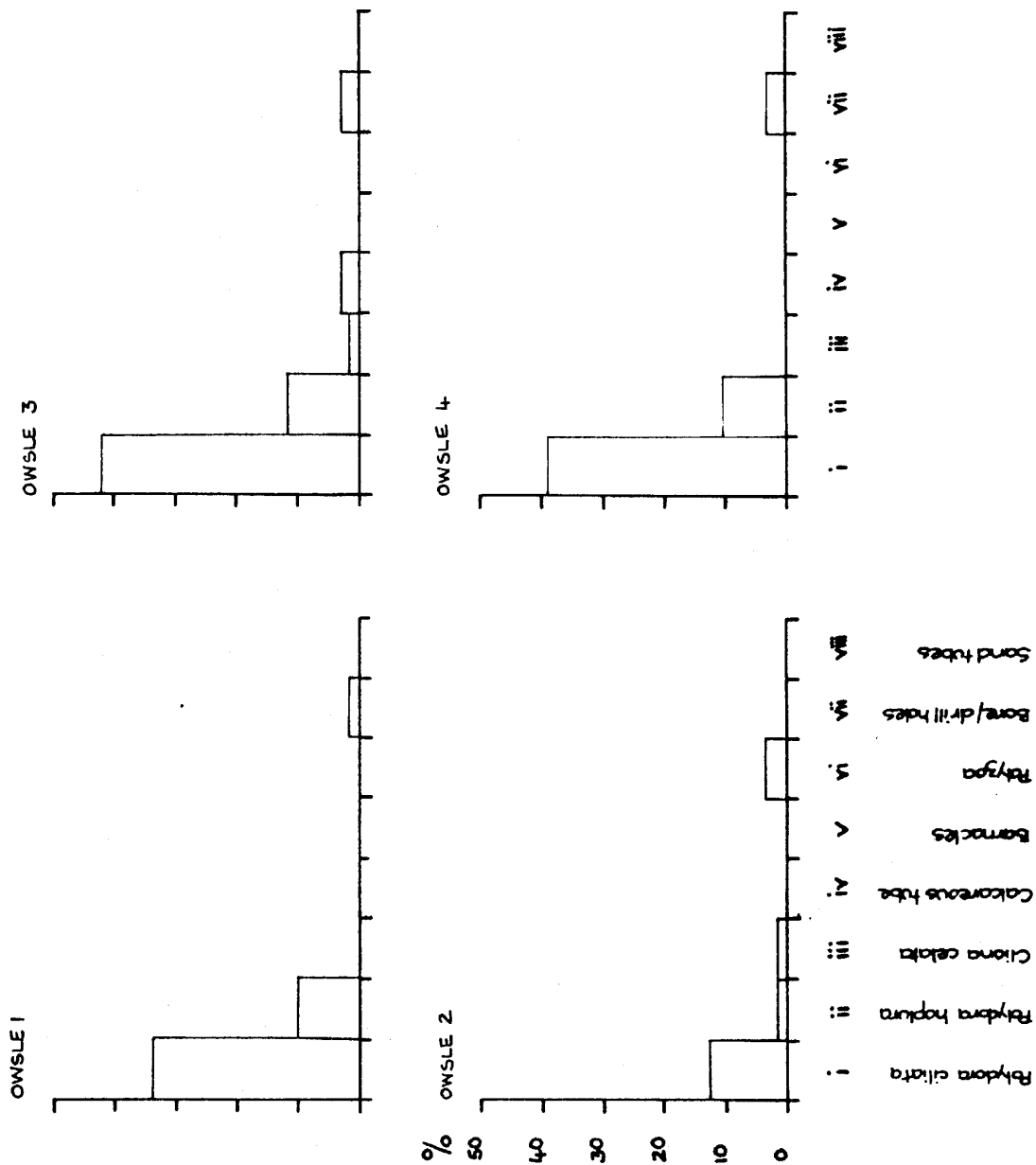


Figure 5.43 Rates of infestation in oyster shell samples from Owslebury

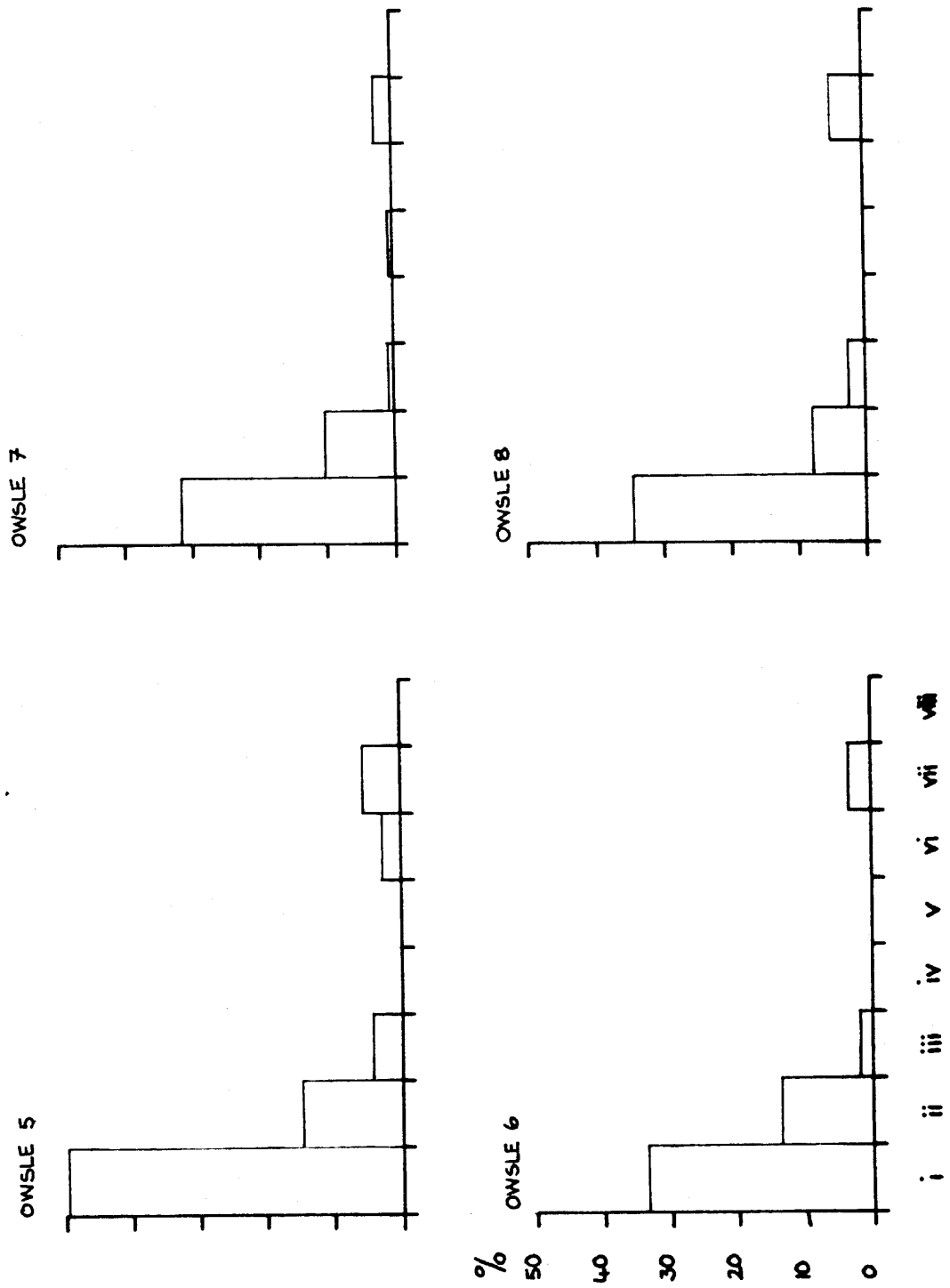


Figure 5.44 Rates of infestation in oyster shell samples from Owslebury

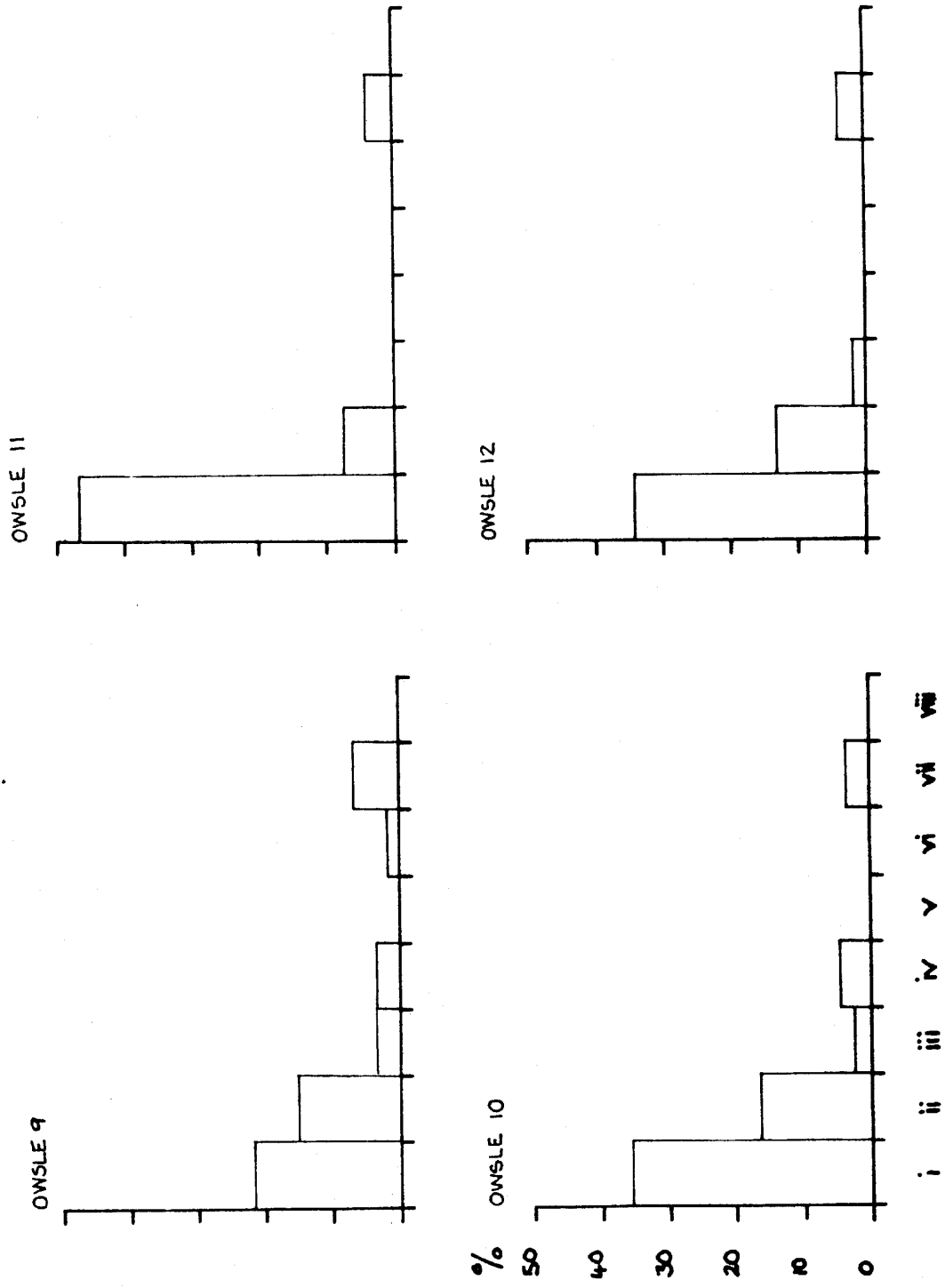


Figure 5.45 Rates of infestation in oyster shell samples from Owslebury

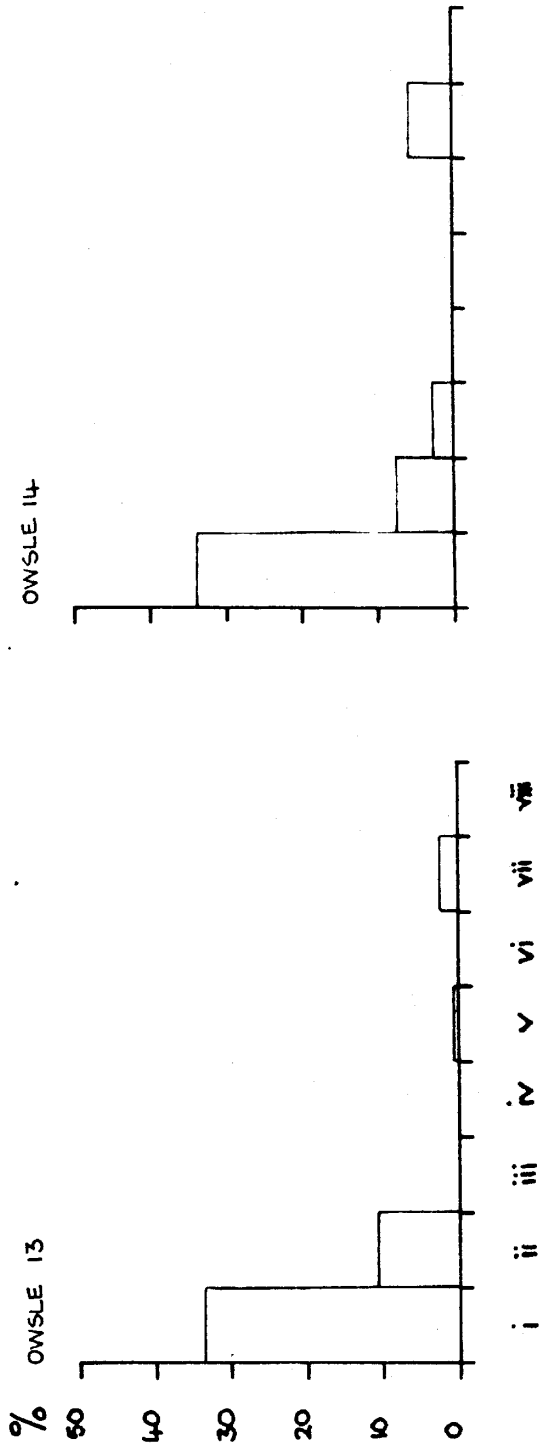


FIGURE 5.46

SIZE FREQUENCY OF OYSTER SHELLS FROM CONTEXT 37 NEWPORT ROMAN VILLA
(LEFT VALVE MAXIMUM DIAMETER)

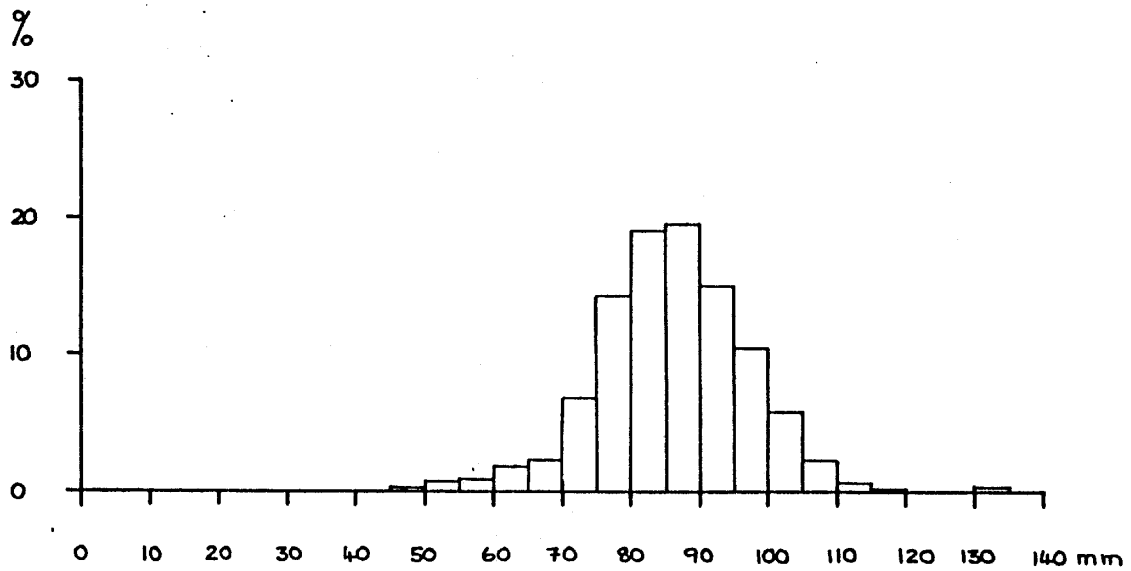


FIGURE 5.47

AGE GROUPS IN OYSTER SHELLS FROM NEWPORT ROMAN VILLA C. 37 RV
n = 931

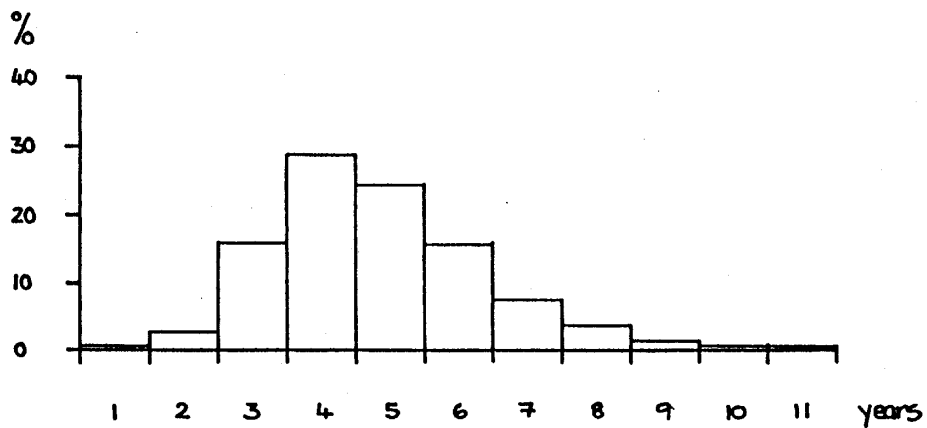


FIGURE 5.48

447

GROWTH RATE OF OYSTERS FROM CONTEXT 37 NEWPORT ROMAN VILLA (RV)
n = 931

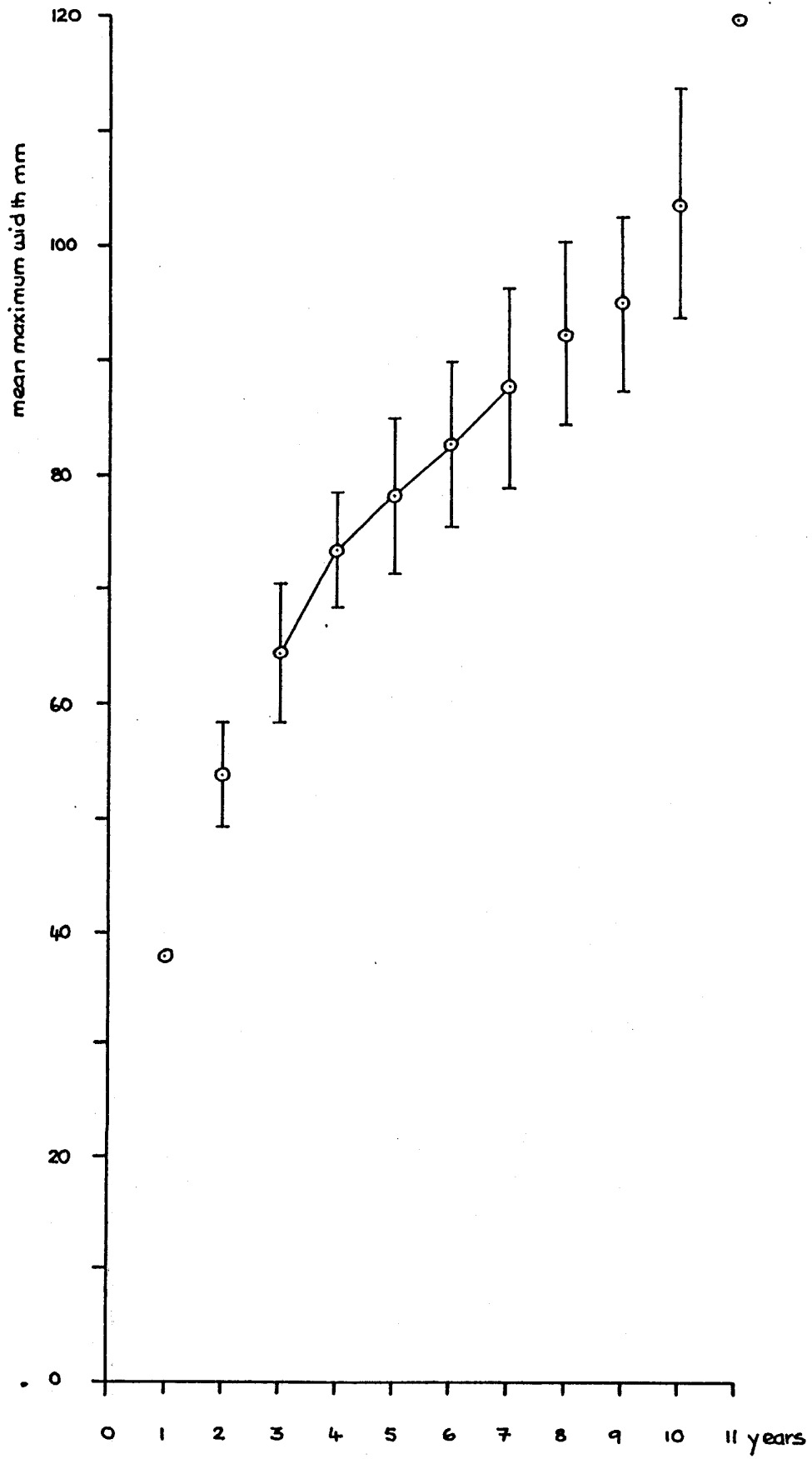


FIGURE 5.49

RATE OF INFESTATION OF OYSTER SHELLS FROM NEWPORT ROMAN VILLA
CONTEXT 37 (LV+RV) n = 1631

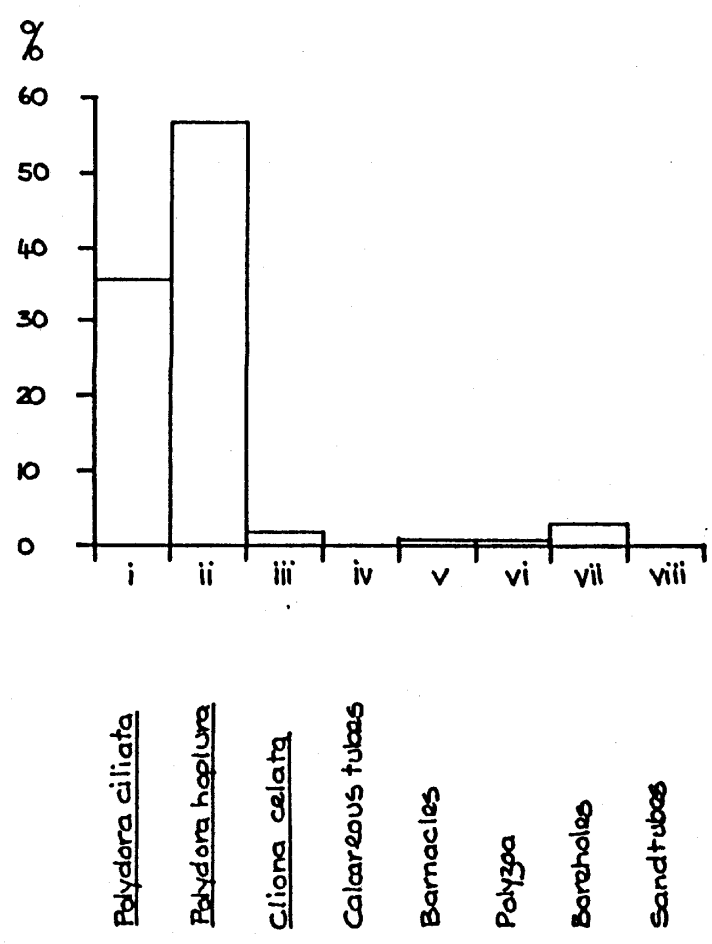


FIGURE 5.50 SIZE FREQUENCIES FOR OYSTER SHELLS FROM 11 HUNDRED, ROMSEY

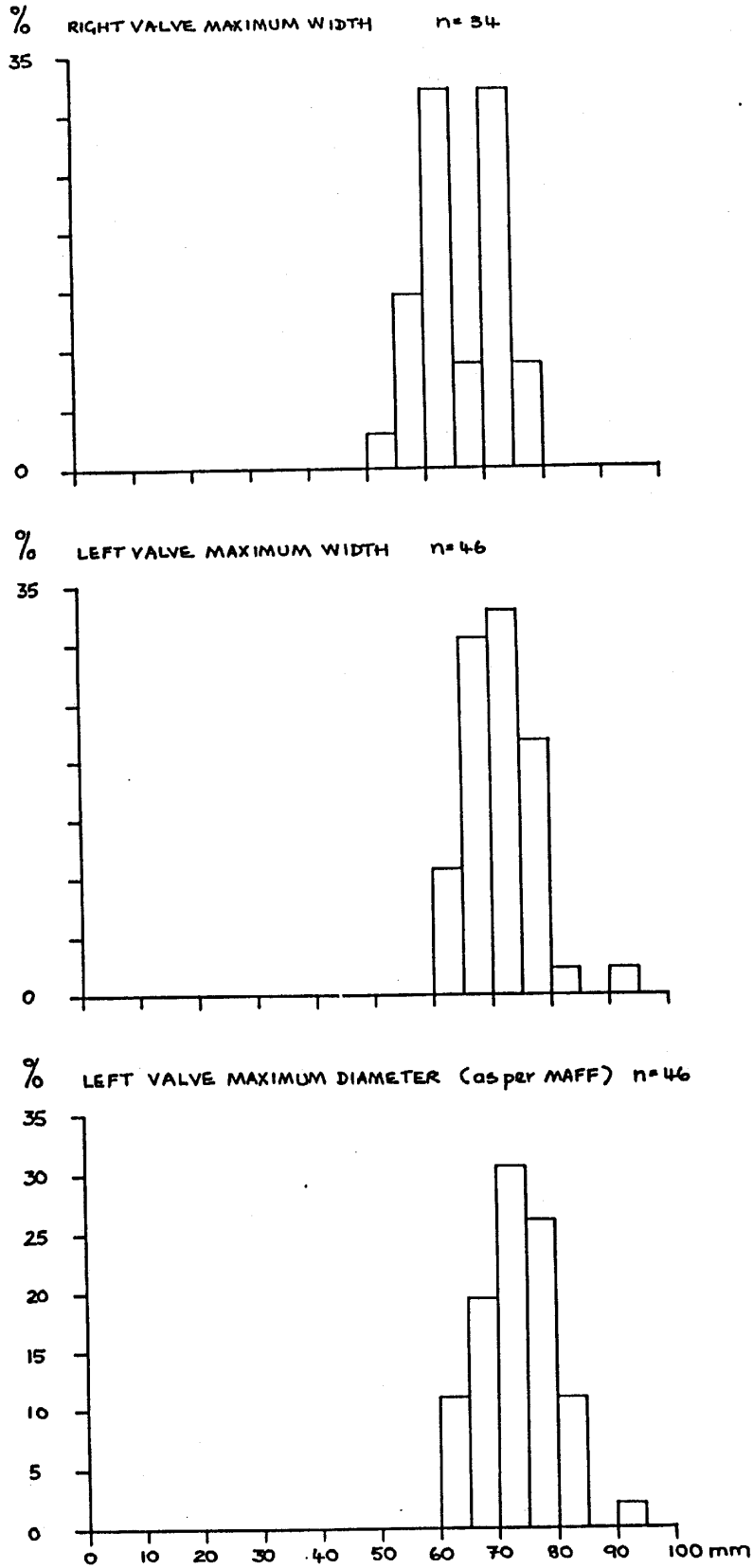


FIGURE 5.51 AGE GROUPS IN OYSTER SHELLS (RV) FROM 11 HUNDRED, ROMSEY

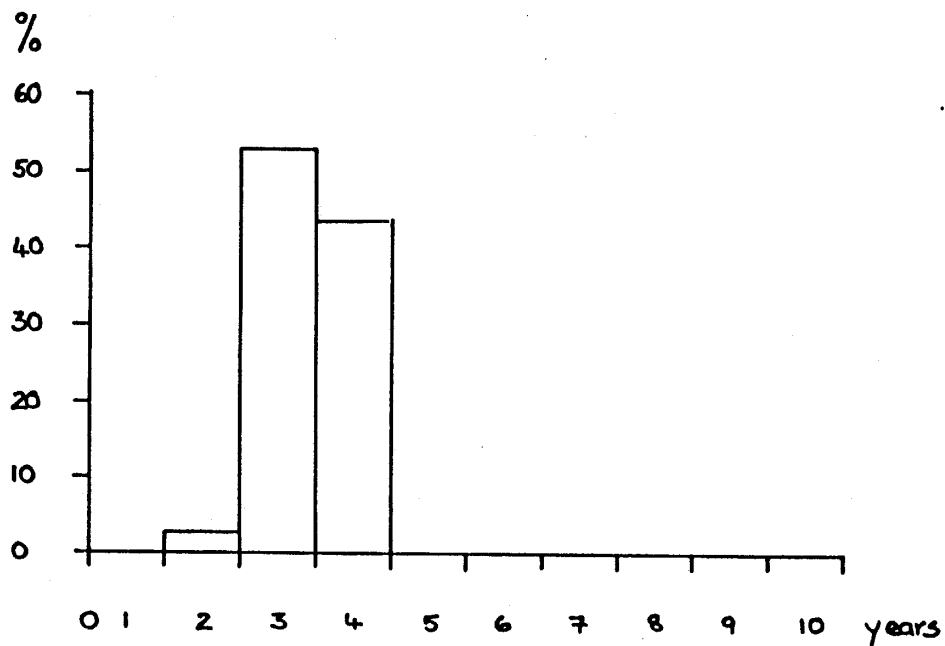
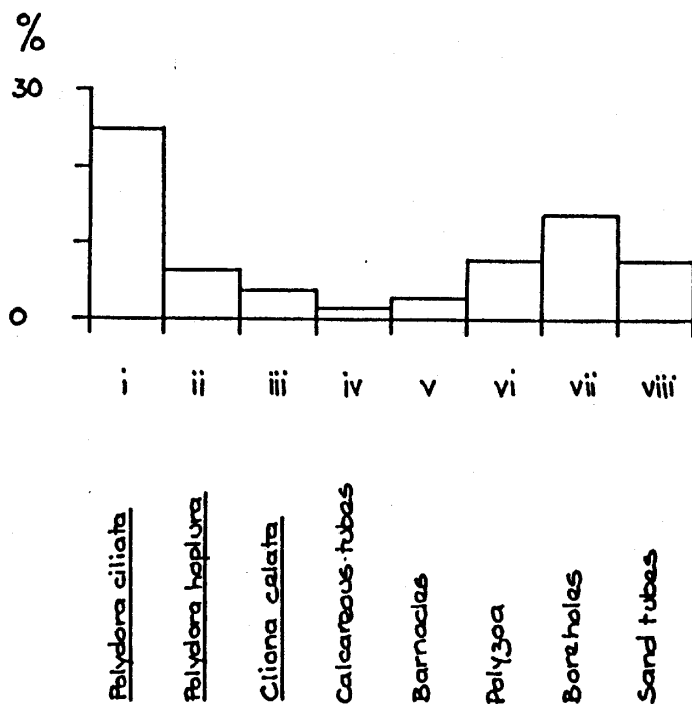


FIGURE 5.52 RATE OF INFESTATION IN OYSTER SHELLS (RV + LV) FROM 11 HUNDRED, ROMSEY



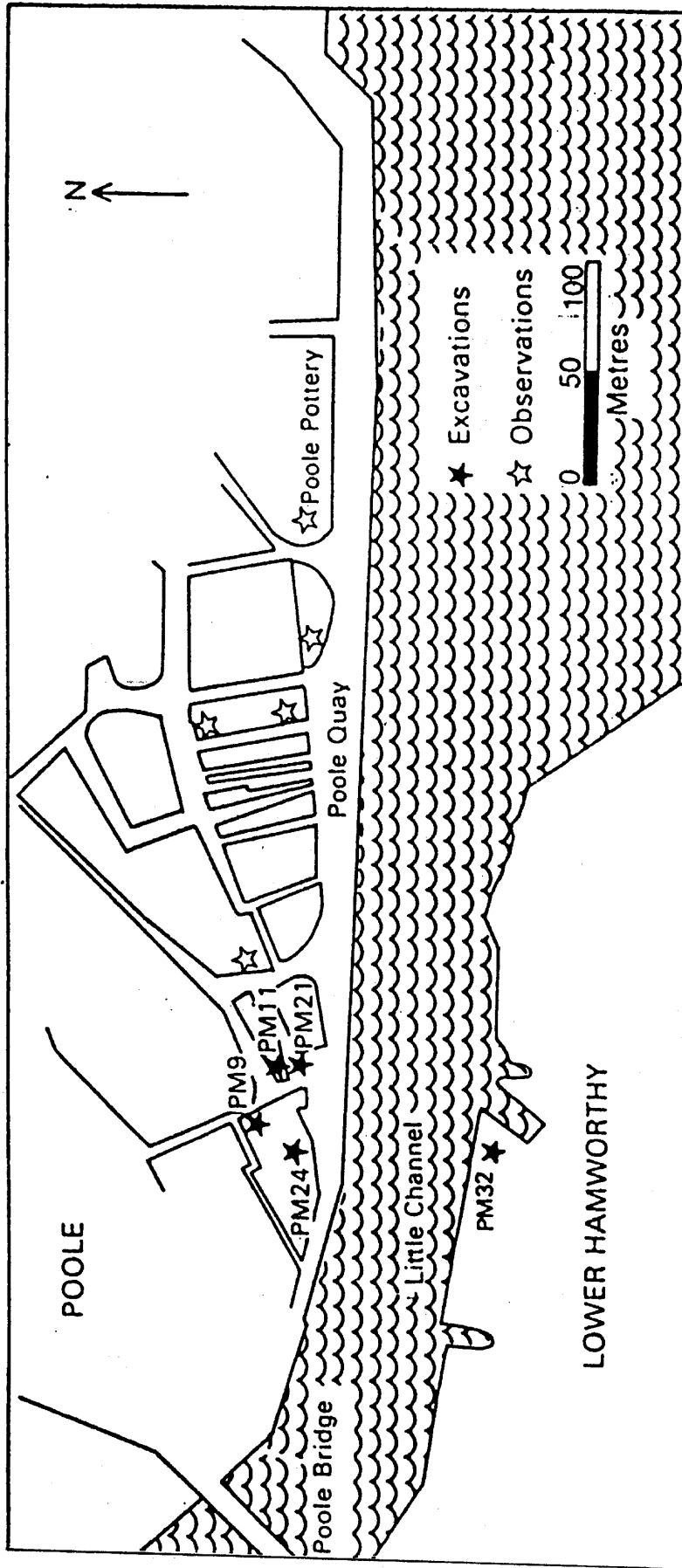


FIGURE 6.1 LOCATIONS OF OYSTER DEPOSITS IN POOLE AND HAMWORTHY, DORSET